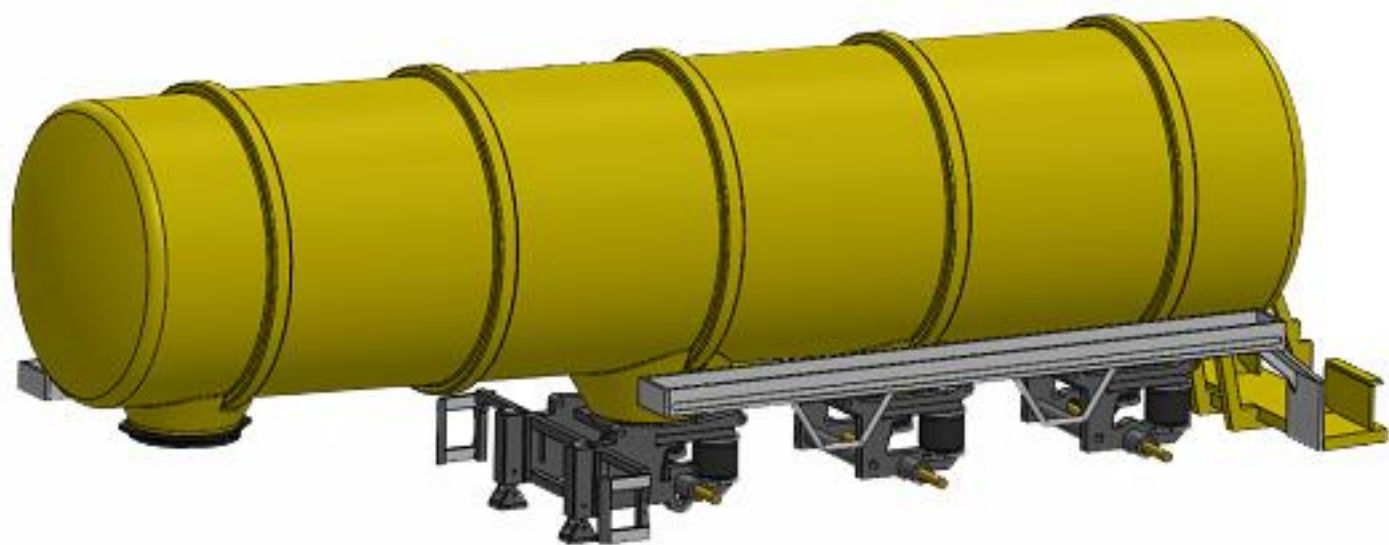


Farmmodels.nl
MINIATUREN & ONDERDELEN

CONSTRUCTION MANUAL



Farmmodels.nl

Premium line

MESTTANK OPLEGGER / SLURRY TANKER

INLEIDING

Beste modelbouwer,

Bedankt voor de aanschaf van een Farmmodels bouwpakket.

U heeft hier de gedetailleerde beschrijving van uw bouwkit in schaal 1:32.
In fases wordt stap voor stap uitgelegd hoe u alle onderdelen samenstelt.

Lees eerst alle fases goed door, voordat u begint.

Het meeste freeswerk zit in de plaat vast met "bridges", dat zijn kleine stukjes om de gefreesde onderdelen in de plaat vast te houden.

Snij door deze bridges heen om de onderdelen los te maken.

Schoon daarna waar nodig het freeswerk op, verwijder eventuele resten en vijl alle scherpe hoeken / randen wat af.

Dat bevordert later het spuitwerk...

In deze beschrijving is niet aangegeven wanneer u het beste onderdelen van kleur / verf kunt voorzien, daar dit afhankelijk is van de door u gekozen kleurstelling. Hou daar zelf rekening mee tijdens de bouw.

Belangrijk is de juiste soort lijm te gebruiken.

Wij adviseren 2 soorten lijm:

Modelbouwlijm voor polystyreen (plastic / kunststof) is Revell Contacta en secundelijm / industrie lijm.

Gedurende de bouw wordt verteld met welke lijm gewerkt dient te worden.

Deze handleiding is zo goed mogelijk samengesteld.

Mocht u derhalve toch vragen hebben, of punten opmerken ter verbetering van de handleiding, kunt u ons mailen op info@farmmodels.nl.

Wij wensen u veel "modelbouw" plezier met het samenstellen van dit model.

Met vriendelijke groet,
Team Farmmodels.nl

INTRODUCTION

Dear modeller,

Thank you for purchasing a Farmmodels kit.

Here you have the detailed description of your kit in scale 1:32.

The manual explains all the stages step by step how to use the different parts.

Please read all stages thoroughly before you begin.

Most parts in this kit are attached on a plate with 'bridges'.

This is to protect the parts from damaging.

Cut through these bridges in order to detach the parts.

Clean up the parts where necessary and remove any residue and file all sharp corners/edges.

This kit does not indicate at what point you should colour/paint the parts, because this depends on your choice of colour palette.

Keep that in mind during the construction of your model.

It is important to use the right type of glue.

We recommend two types of glue:

Model making glue for polystyrene (plastic) Revell Contacta and superglue/industrial glue.

This manual has been prepared with great care and preciseness.

Should you therefore still have questions or points for improvement concerning the manual, please contact us by e-mail via info@farmmodels.nl

We wish you good "modeling" fun with composing this model.

Sincerely,

team Farmmodels.nl

Benodigdheden - Tools

Voor de bouw van onze kitjes is het makkelijk om over het volgende gereedschap te beschikken:

For the construction of our kit we recommend the following tools:

Revell mes - Revell knife



Pincet - Tweezers



Punt tang Pliers



Revell lijm - Revell glue



Superlijm - Superglue



ZAP-O - Lijm
ZAP-O Glue

Vijl - File



Boortjes - Drill bits



Zijkniptang - Side cutter



Advies: Revell Vloeibare plasticlijm.

Deze lijm droogt niet direct en geeft de mogelijkheid om delen te positioneren.

Advice: Revell Liquid plasticglue.

This glue doesn't dry instantly and gives the possibility to position the parts.

Advies: Farmmodels superlijm

Deze lijm droogt direct zodat de delen niet lang vastgehouden hoeven te worden.

Advice: Farmmodels Superglue.

This glue dries instant so that parts don't need to be held long.

Advies: ZAP-O FOAM SAFE CA

Deze lijm is geschikt voor ramen en verlichting. Droogt niet direct, en geeft geen wite waas.

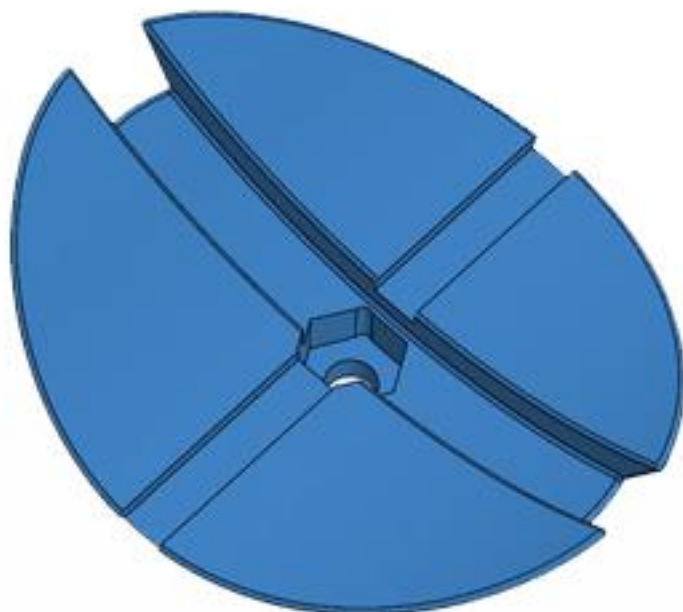
Advice: ZAP-O FOAM SAFE CA

This glue dries without white loo, and is suitable for lights and windows

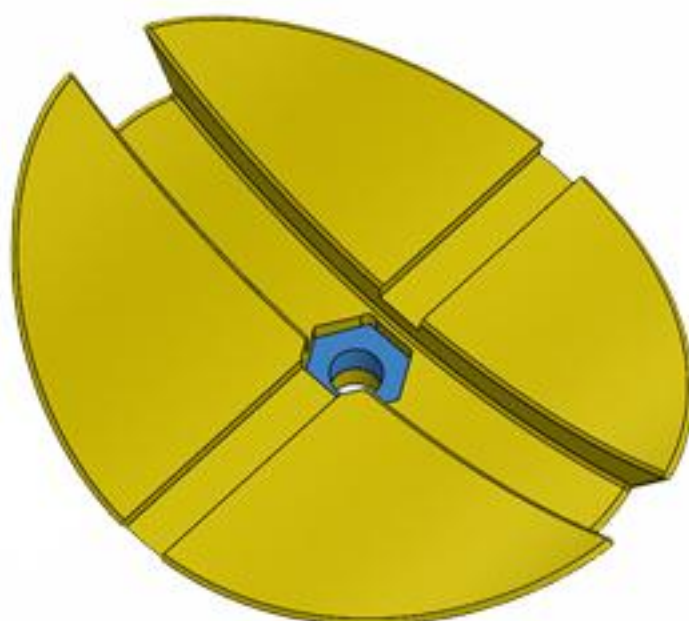
Gedurende de bouw wordt aangegeven welke lijm het meest geschikt is.

During the construction will be shown which glue is most suitable.

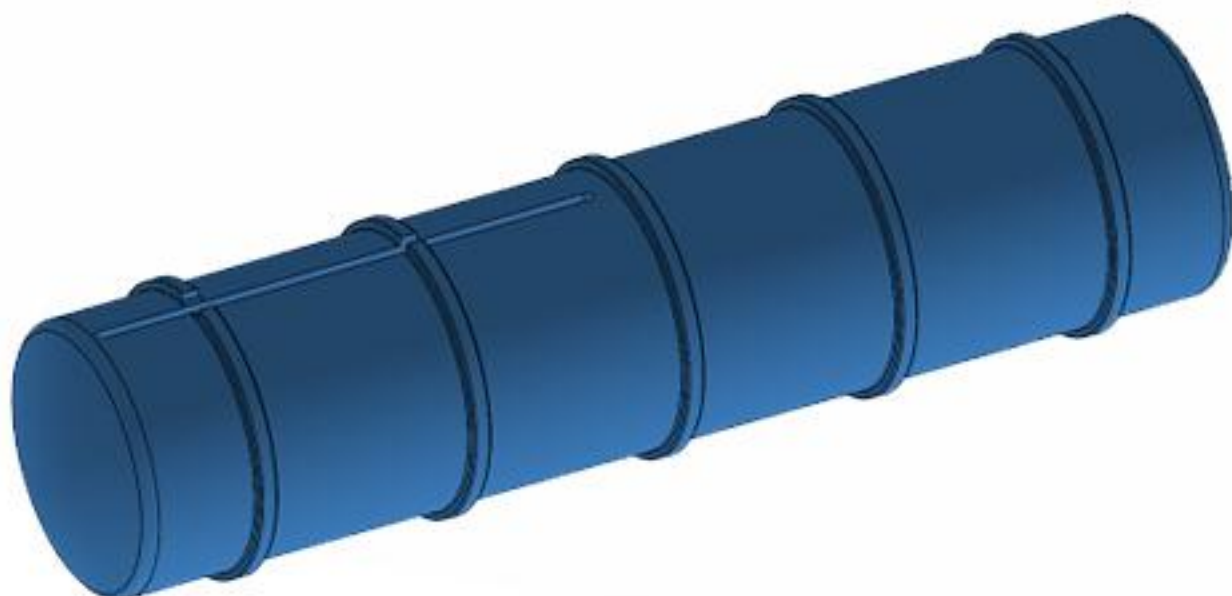
1 Start
3X



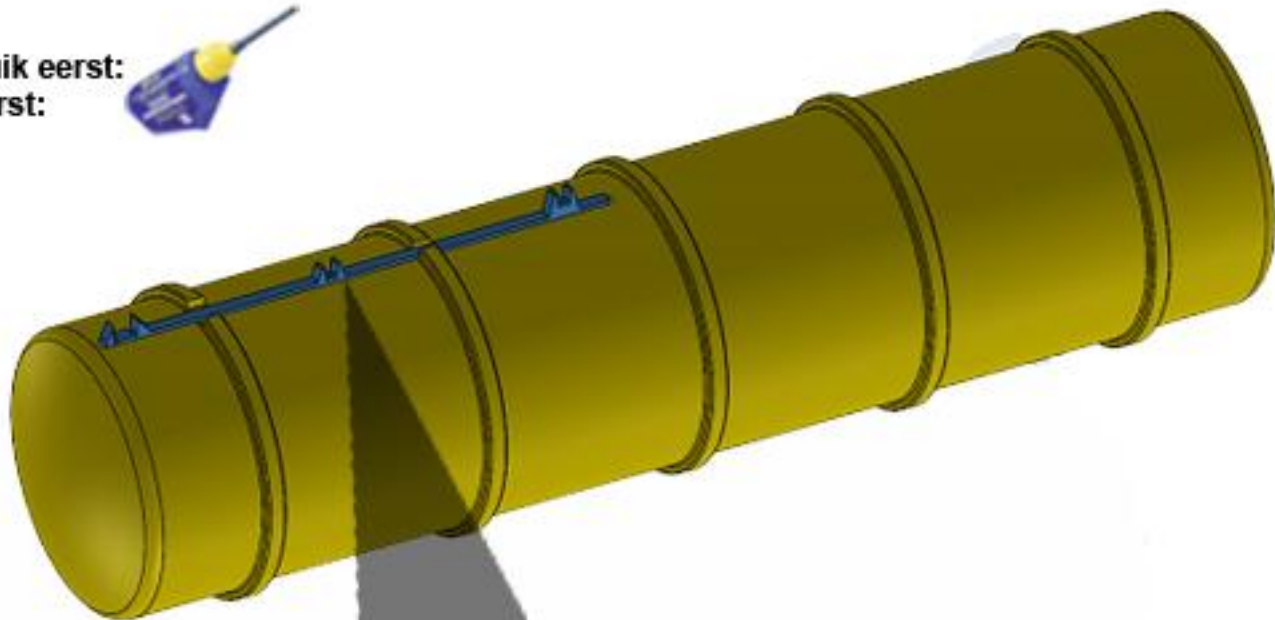
2  **3X**



3



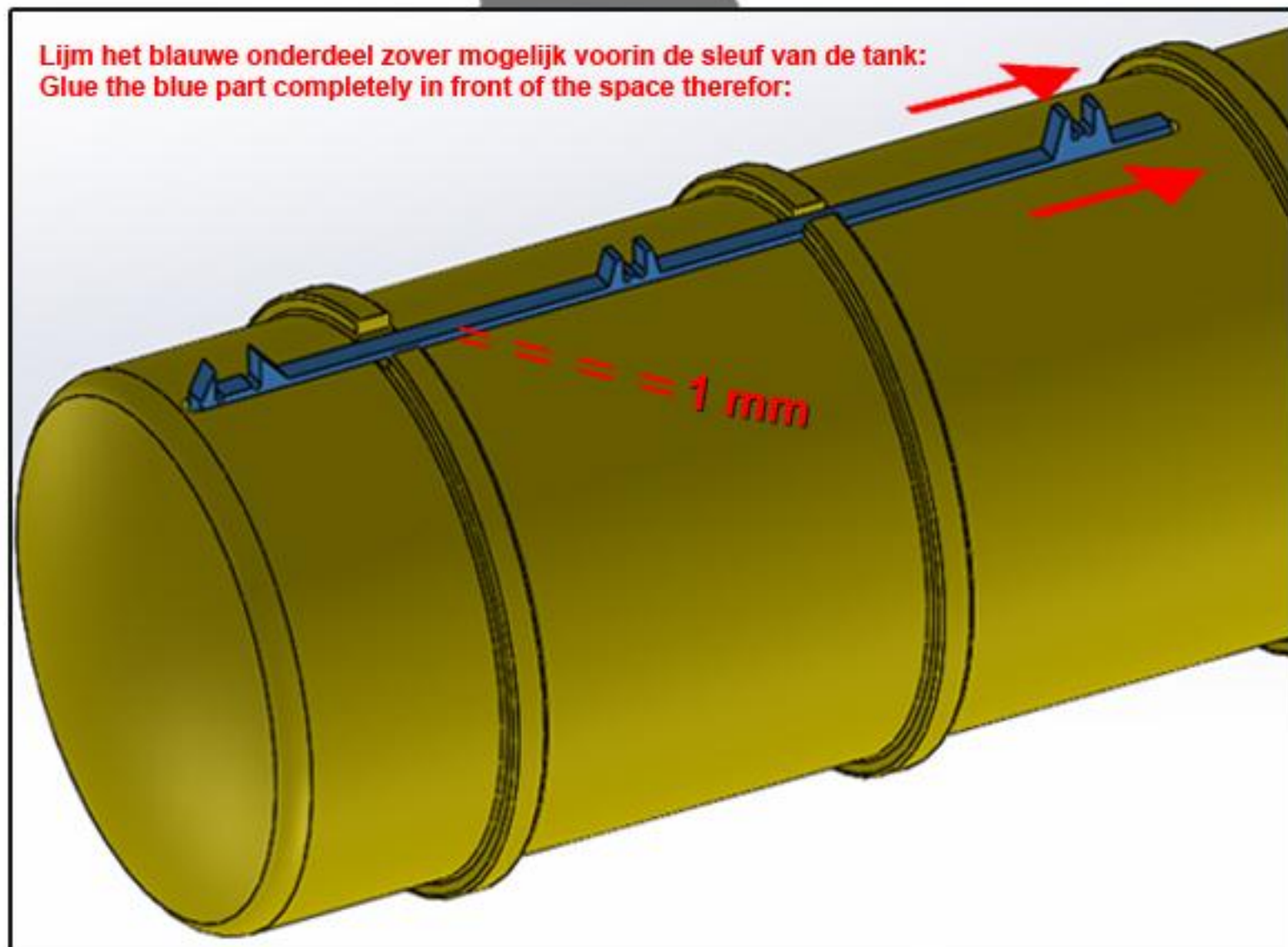
4 Gebruik eerst:
Use first:



5 Gebruik na monstge:
Use after mounting:



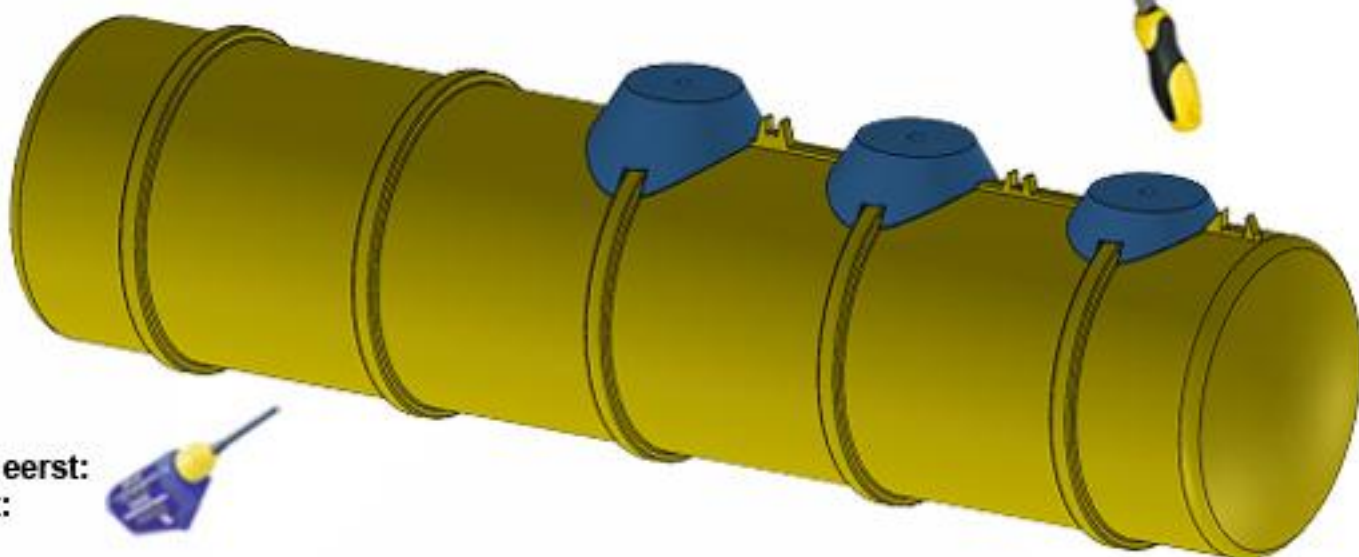
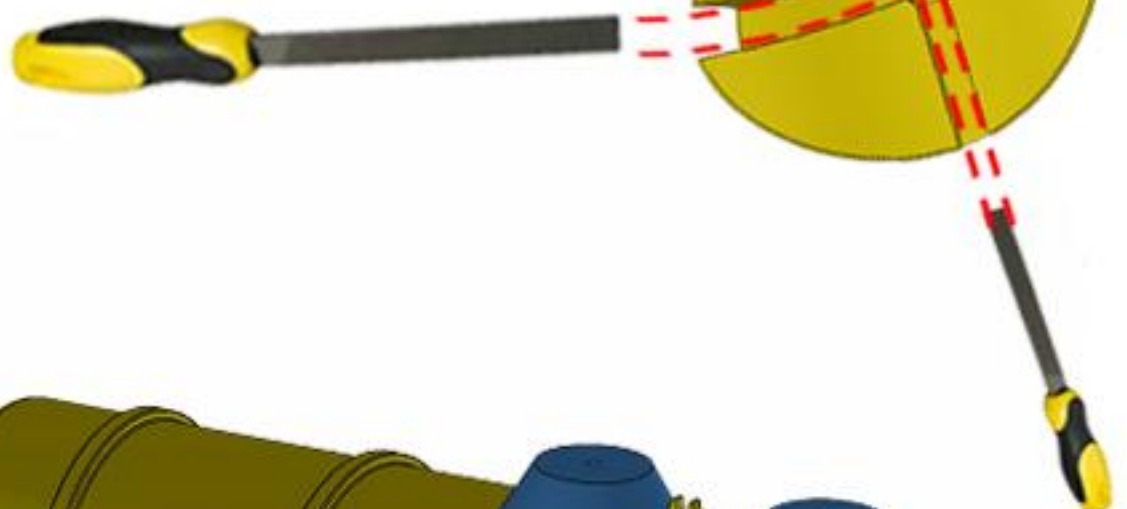
Lijm het blauwe onderdeel zover mogelijk voorin de sleuf van de tank:
Glue the blue part completely in front of the space therefor:



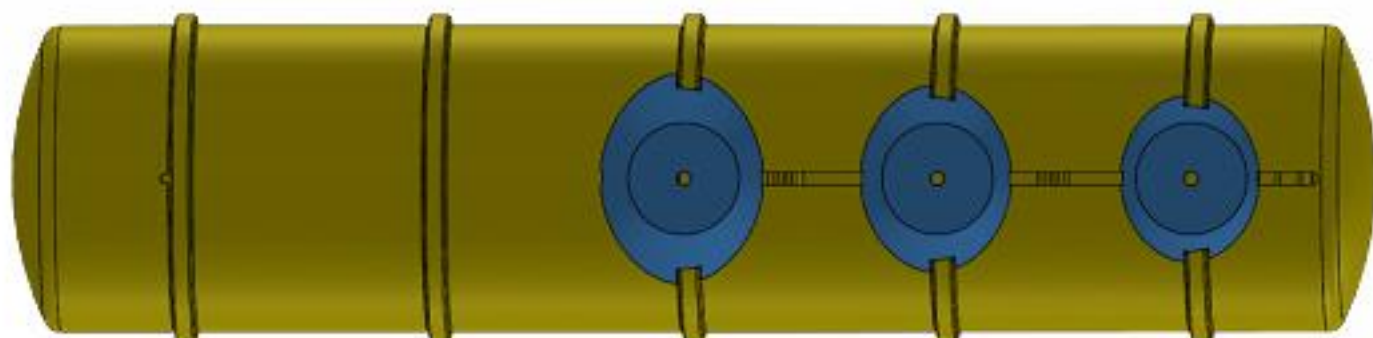
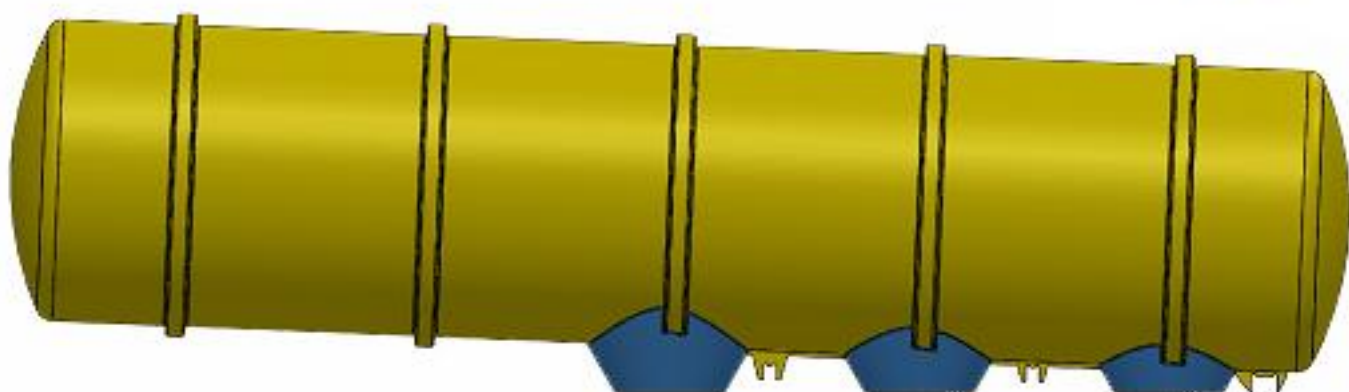
6

Indien nodig, vijl de "Kelken" passend op de ringen van de mesttank

When needed, make space in the "Chalices" to fit the rings of the slurry tanker

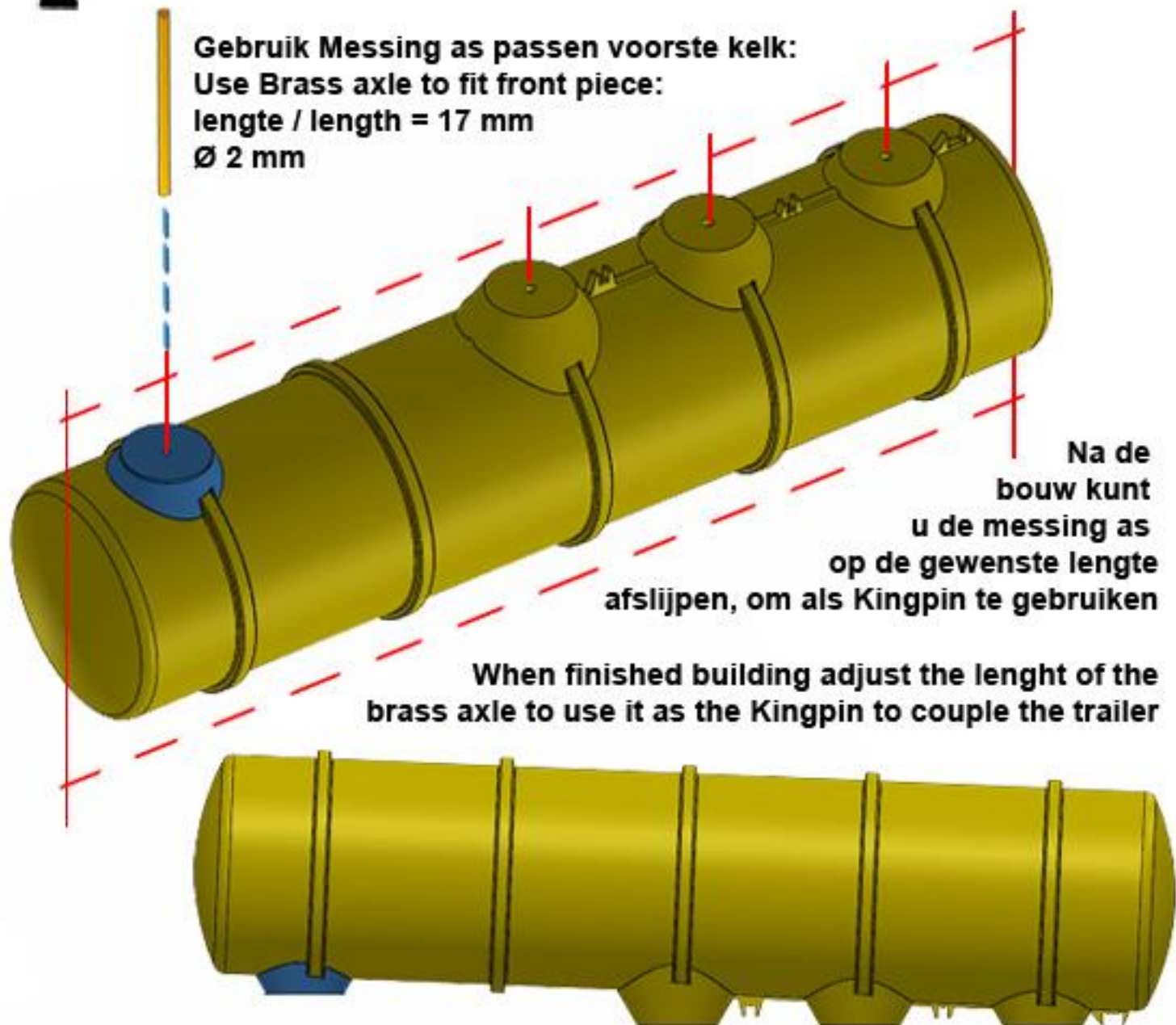
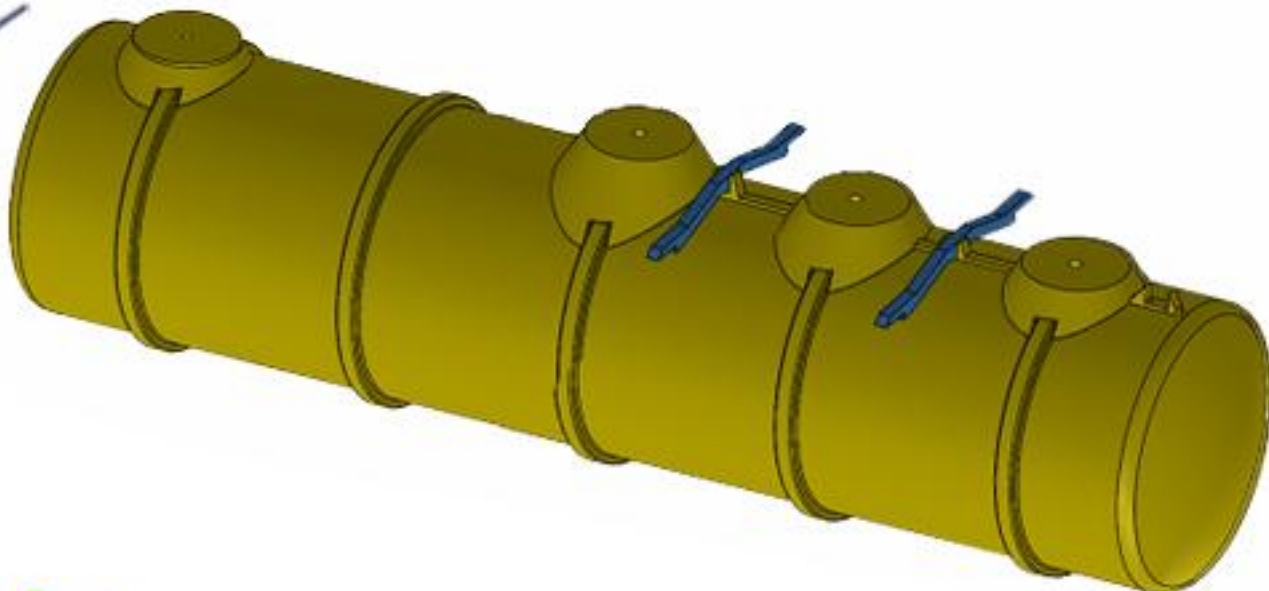


Gebruik eerst:
Use first:

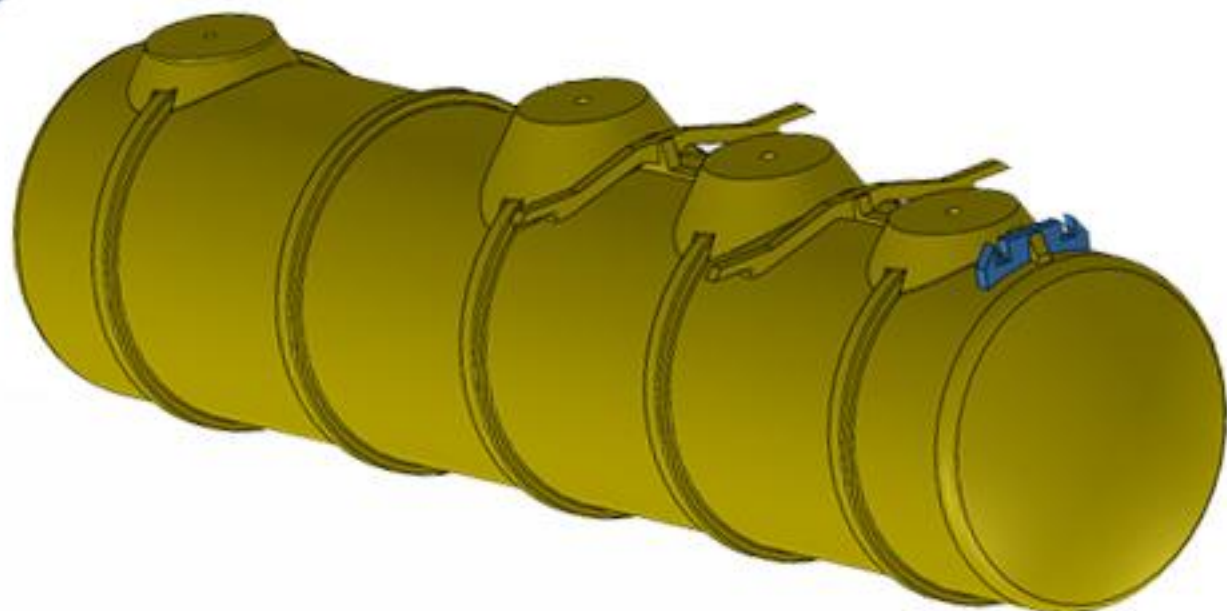


7

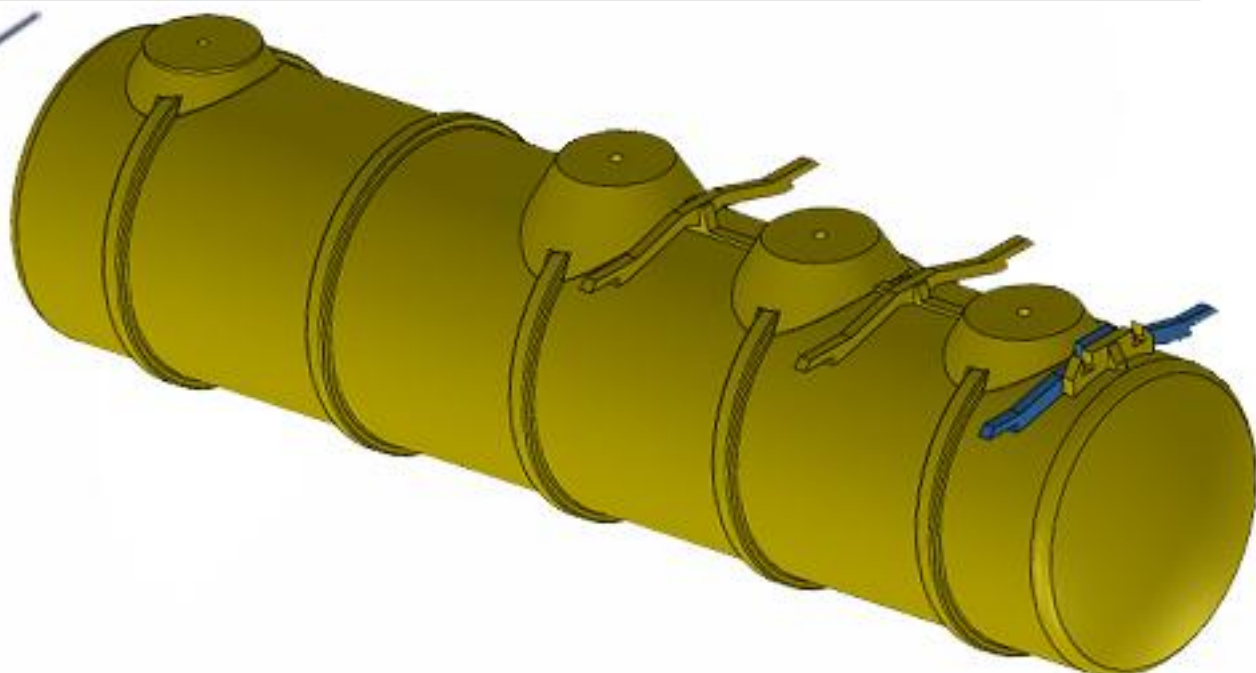
Zorg dat alle kelken in lijn staan. Nalijmen met industrielijm:
 Make sure all points are in line. After use this glue to finish:

**8**

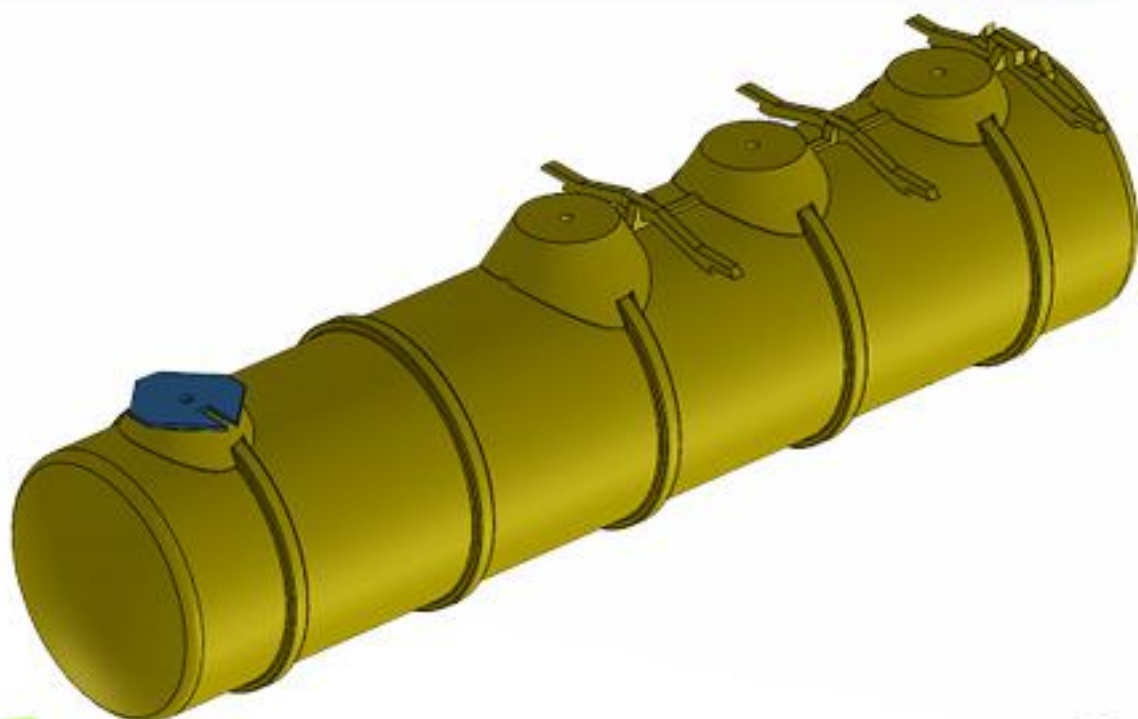
9

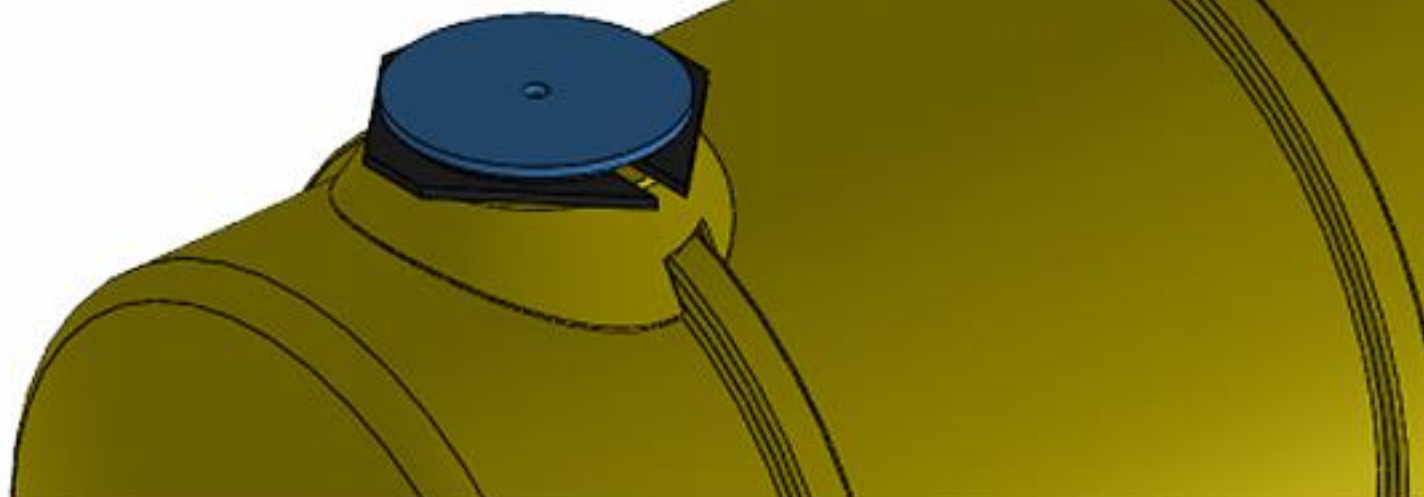


10

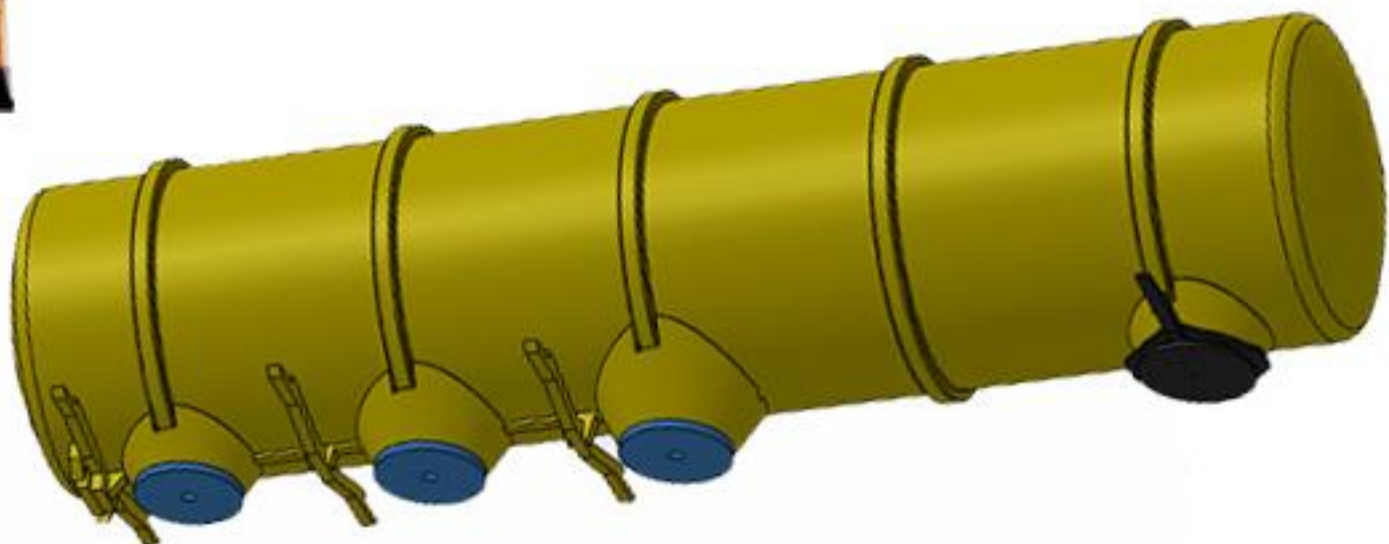


11

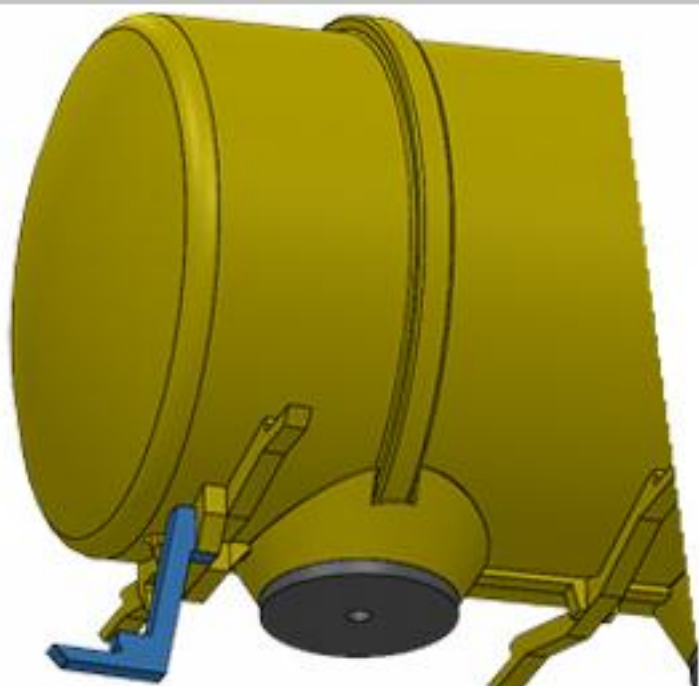


12**13****14**

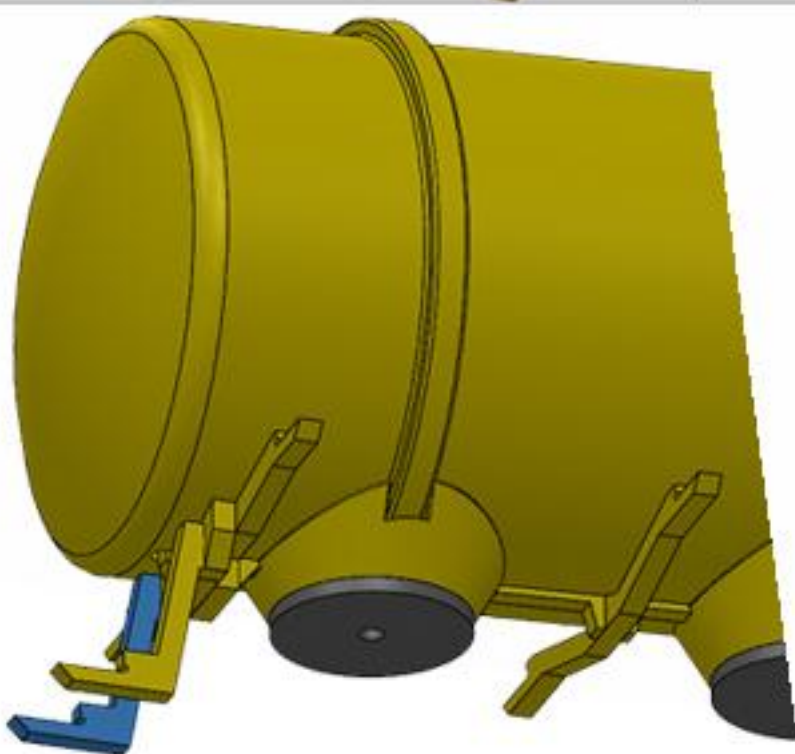
15



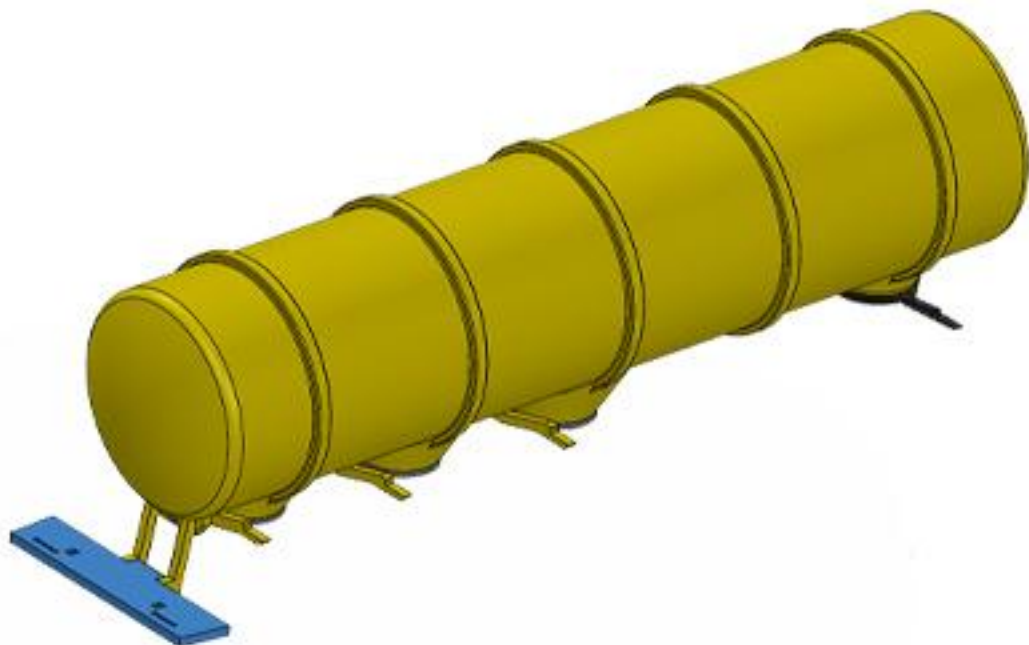
16



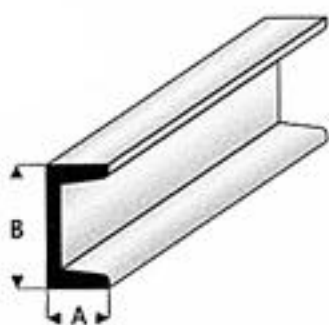
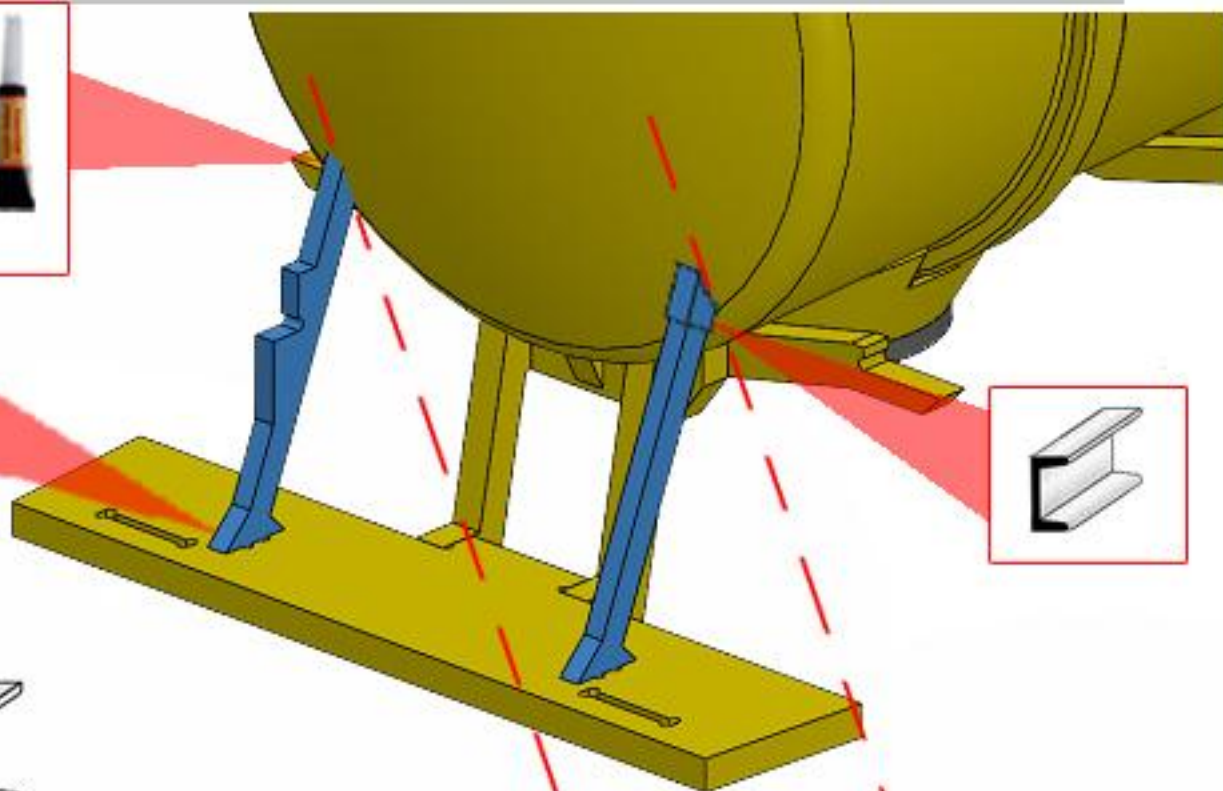
17



18



19



profiel / profile:

A= 2 mm

B= 4 mm

Lengte = ?? mm

length = ?? mm

Maak de 2 steunen passend met de ronding van de mesttank meelopend...

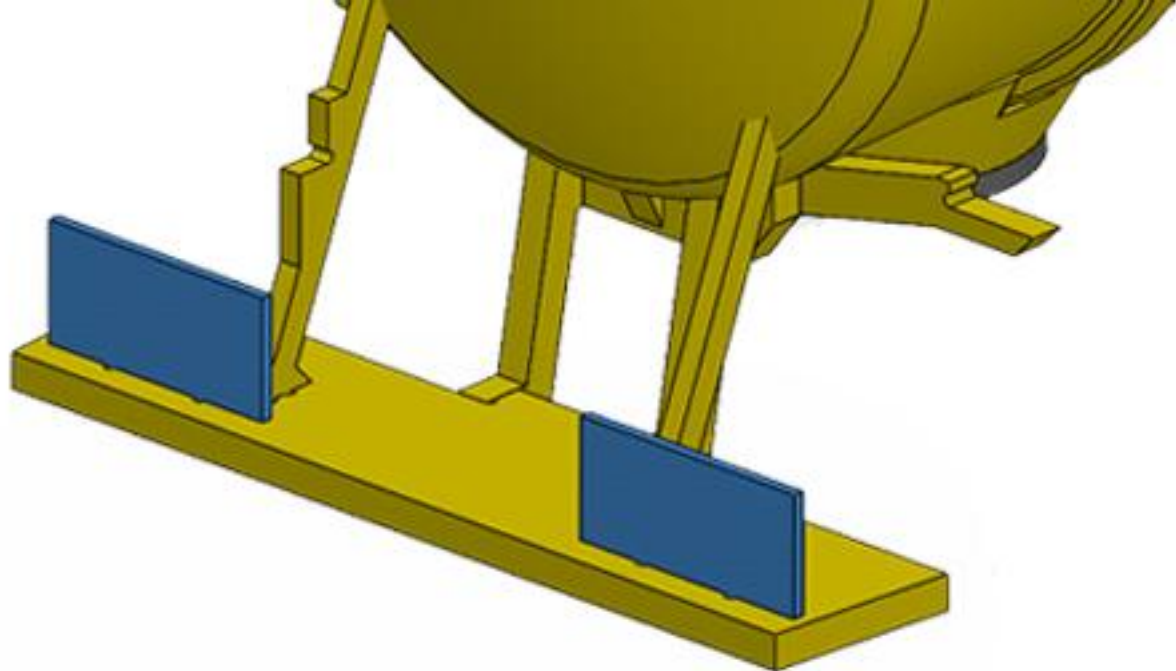
Indien nodig, verleng de steunen met de U profielen...

Make the 2 beams to fit the slurry tanker...

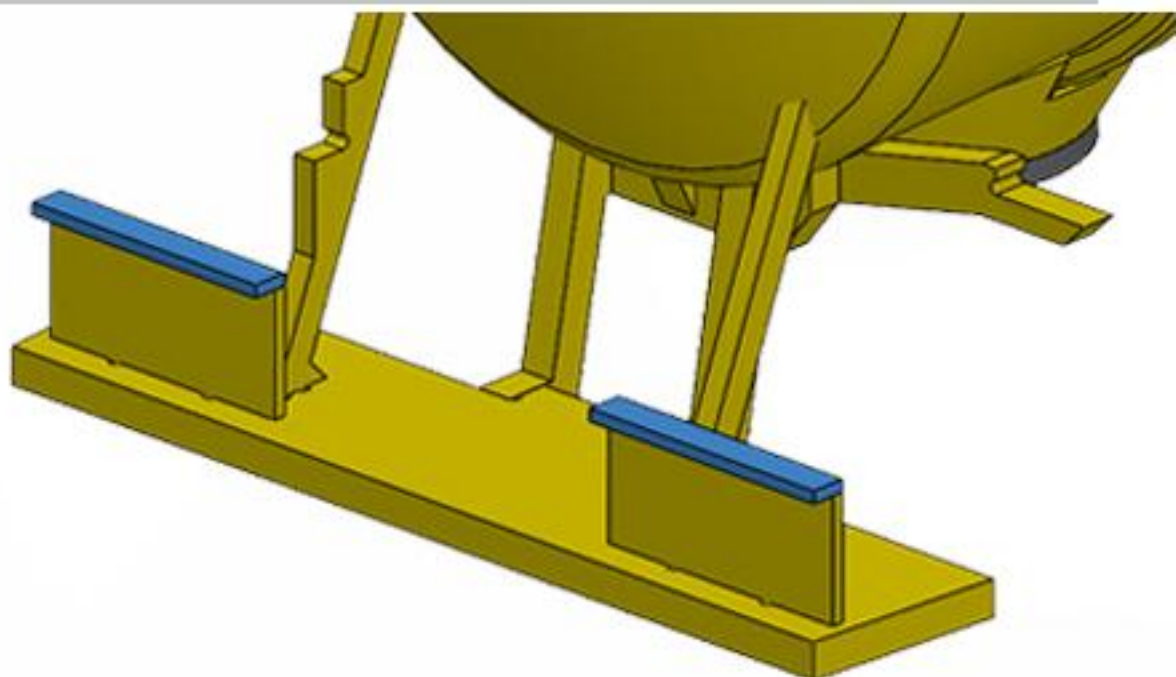
In case needed, extend the beams with the U- profiles...



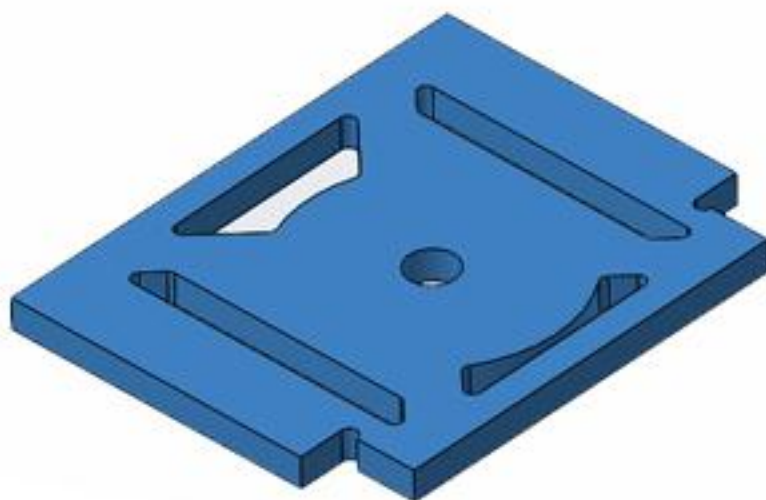
20



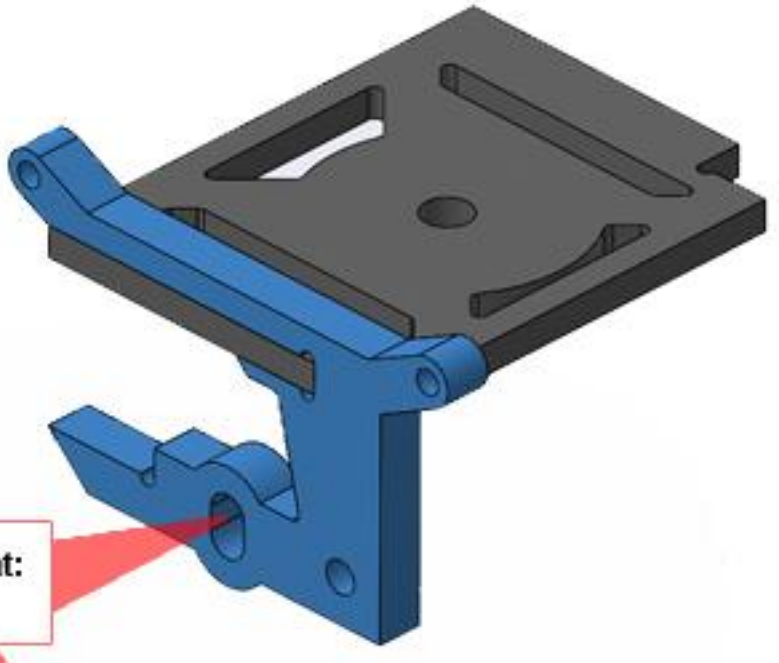
21



22 Start

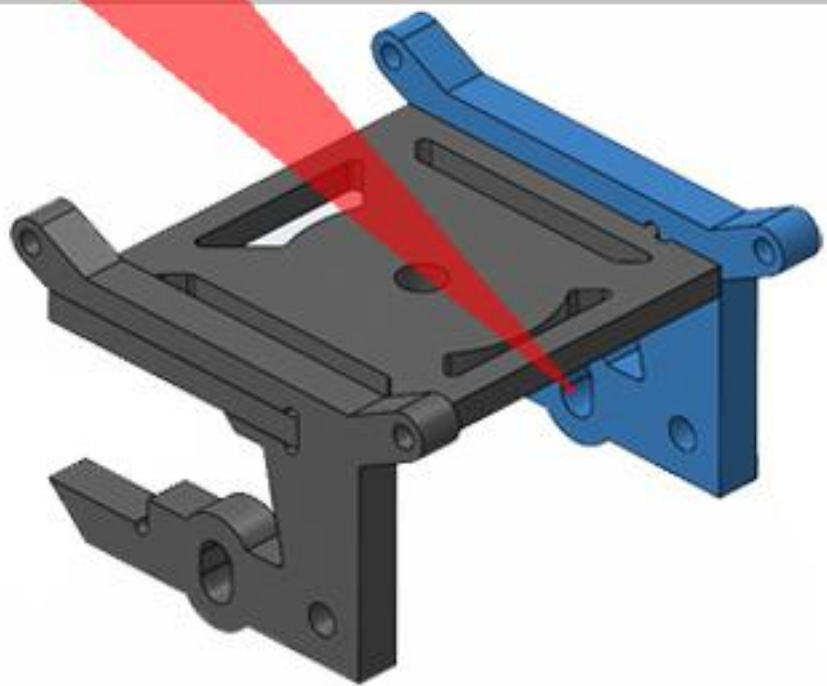


23



Gebruik onderdeel met ovaal sleufgat:
Use part with oval opening

24

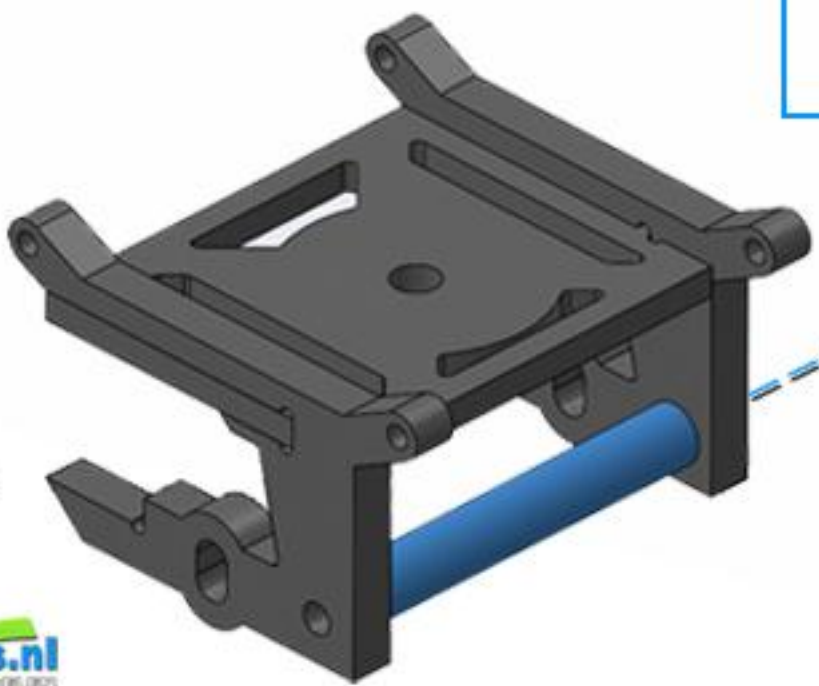


25



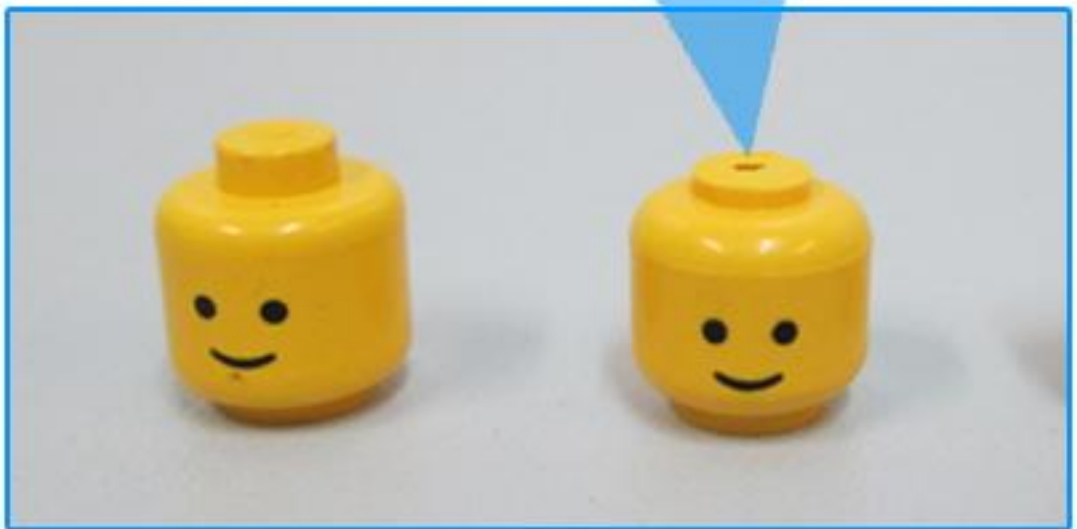
profiel / profile:
A = 2 mm
B = 4 mm
length = 25.8 mm

Messing as:
Brass axle:
Ø 2 mm
length = 32 mm



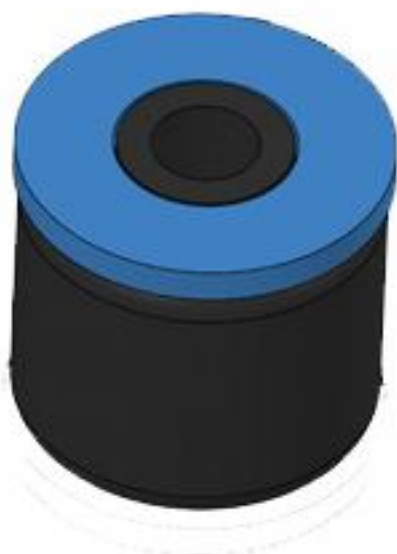
26

6x



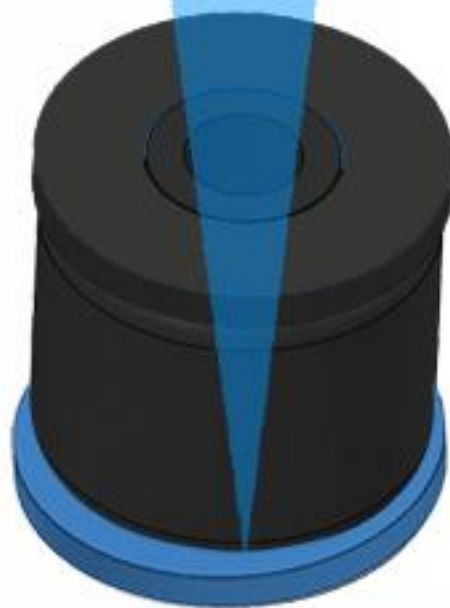
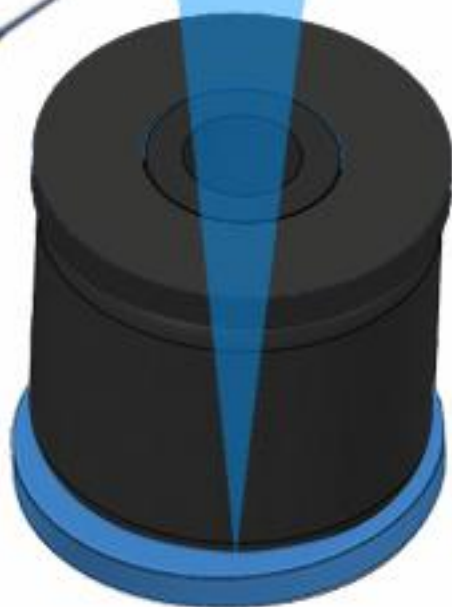
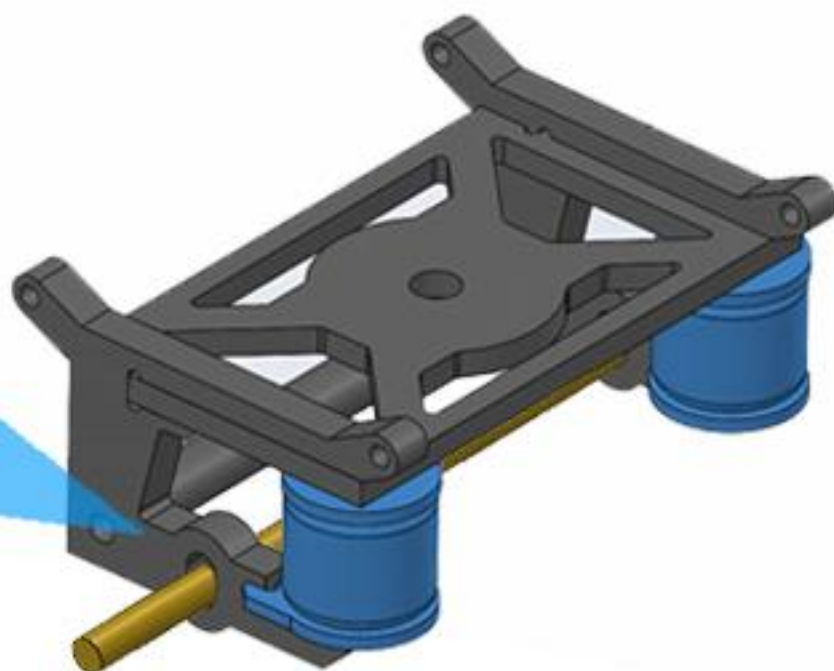
27

6x



=

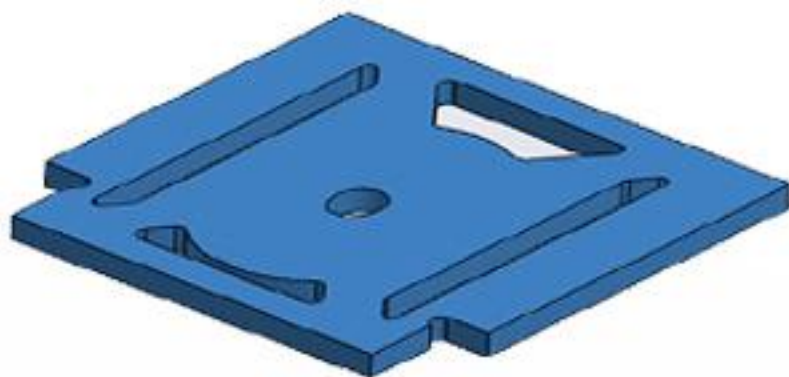


28**3x****29****3x****30**

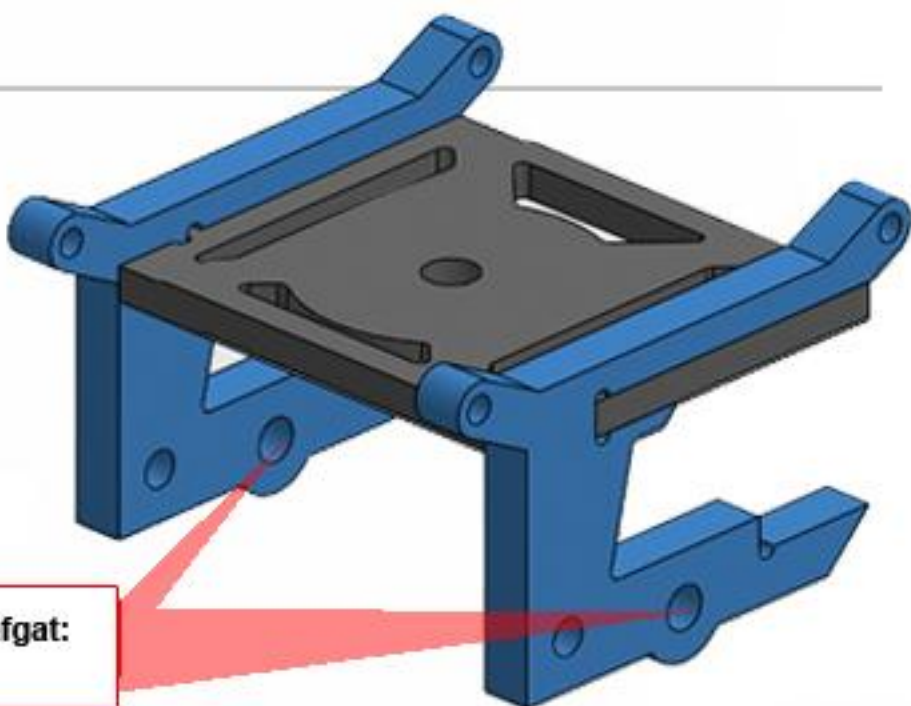
Messing as:
 Brass axle:
 Ø 2.5 mm
 Lengte = afhankelijk
 van gekozen banden

Length = used for
 tires choosen

34 Start



35

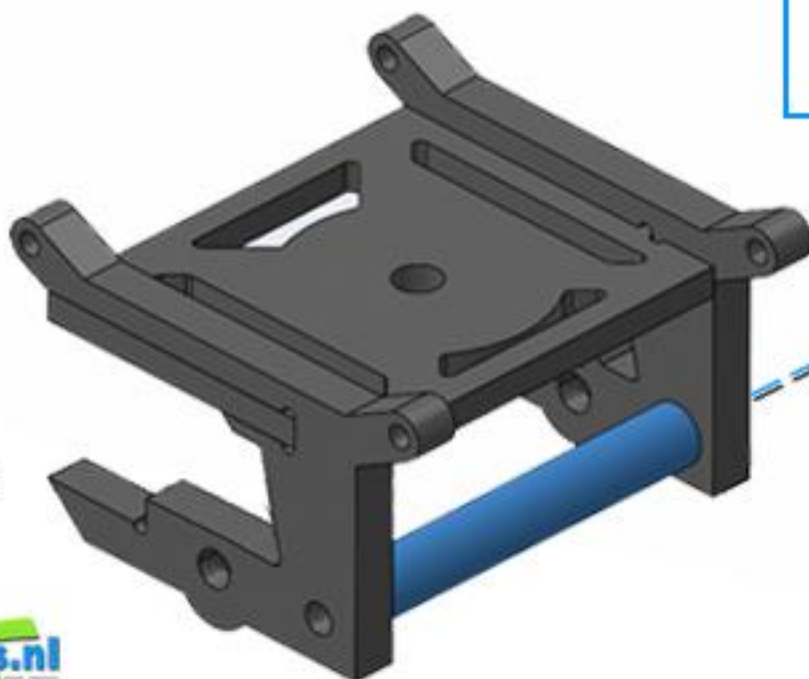


Gebruik onderdeel met rondsleufgat:
Use part with round opening

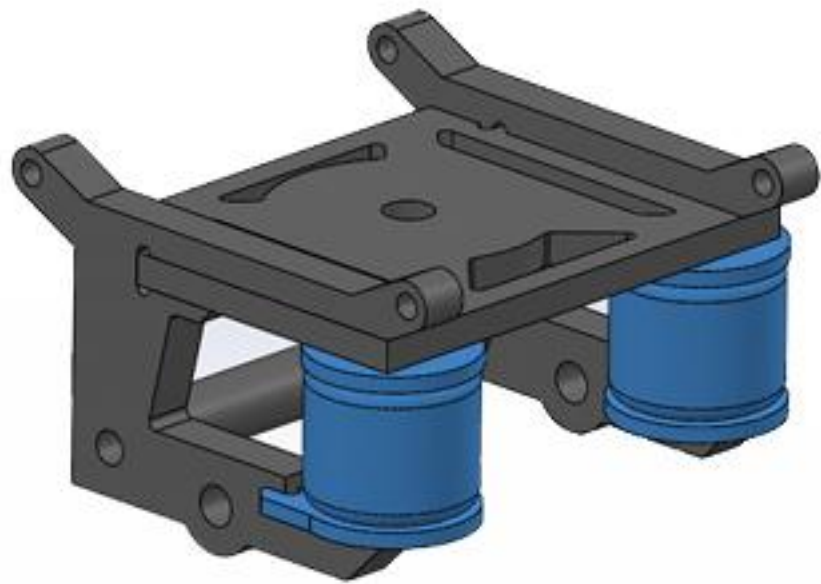
36



profiel / profile:
A = 2 mm
B = 4 mm
length = 25.8 mm

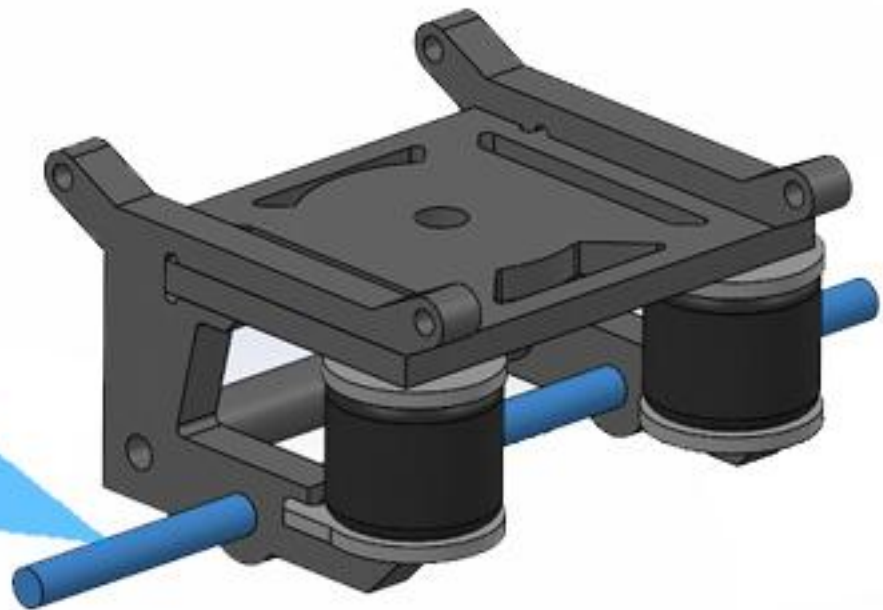


Messing as:
Brass axle:
Ø 2 mm
length = 32 mm

37**38**

Messing as:
 Brass axle:
 Ø 2.5 mm
 Lengte = afhankelijk
 van gekozen banden

Length = used for
 tires chooseen

**39****2x**

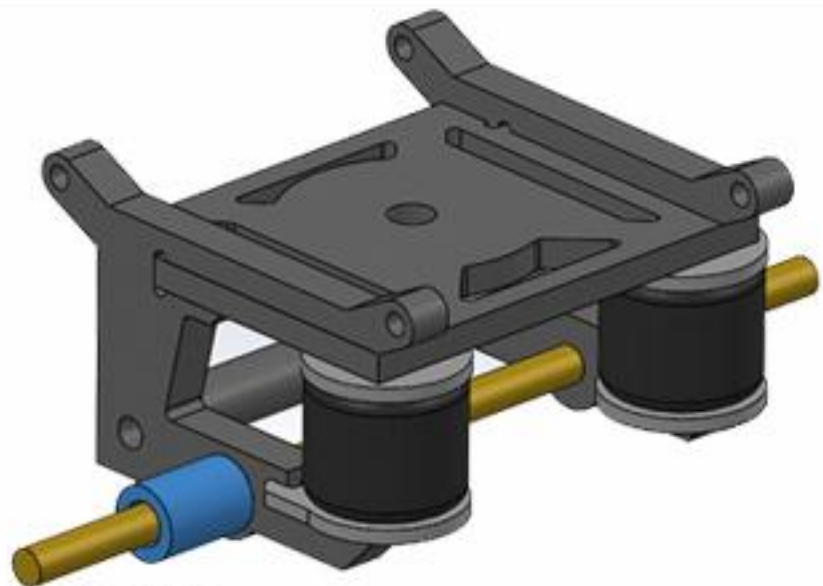
profiel / profile:

A= 3 mm

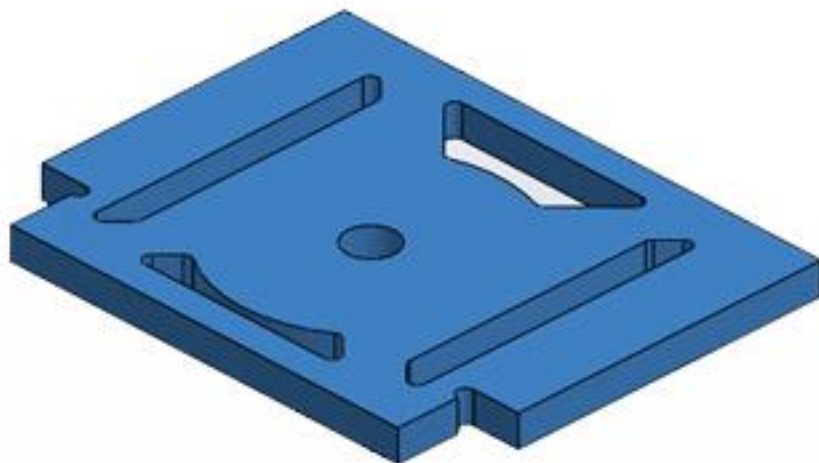
B= 4 mm

Lengte = afhankelijk van gekozen banden

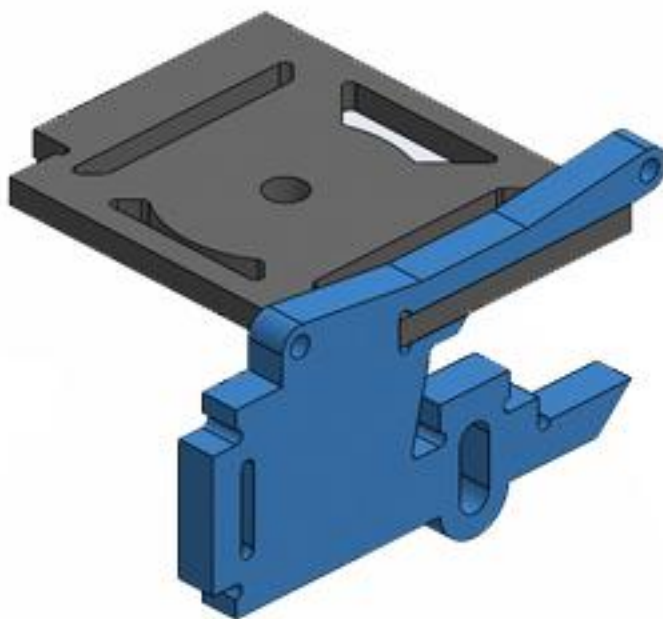
length = used for tires chooseen



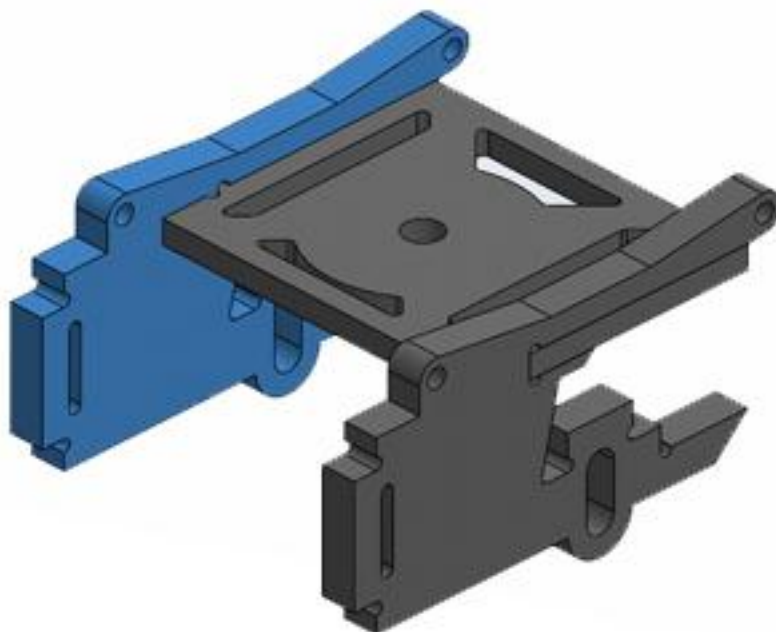
40 Start



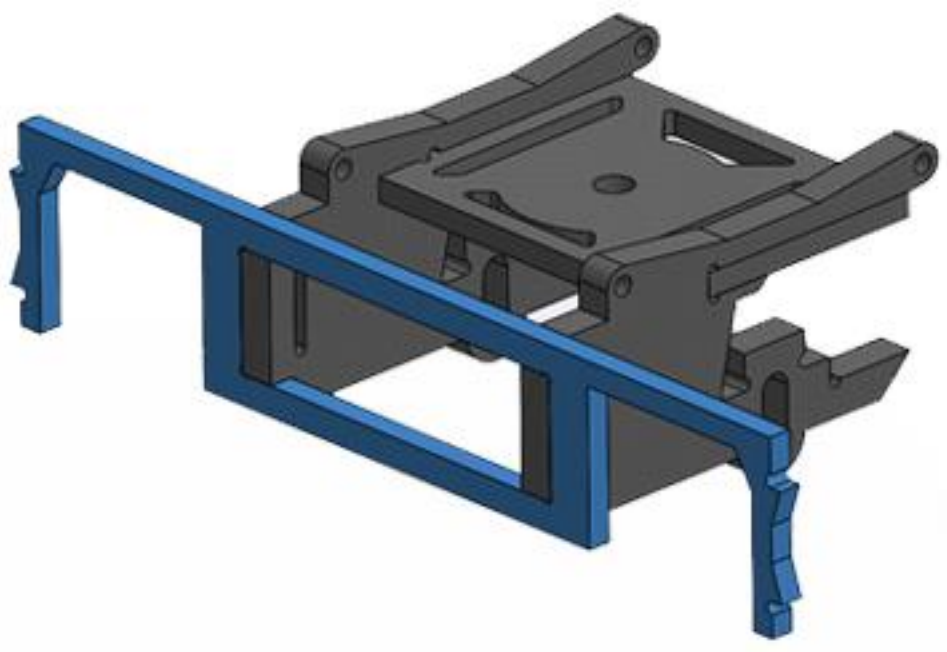
41



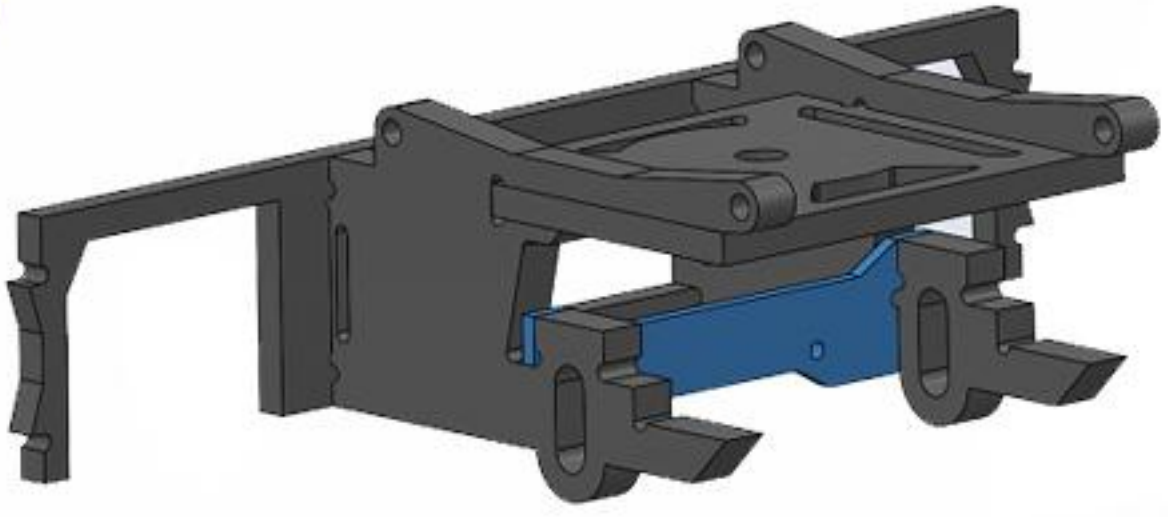
42



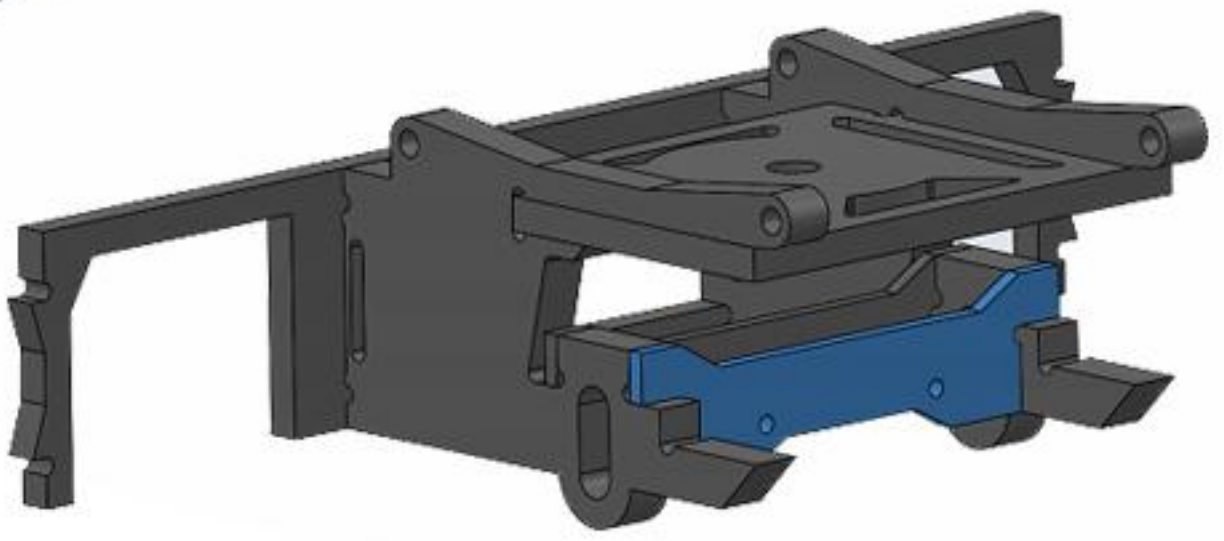
43



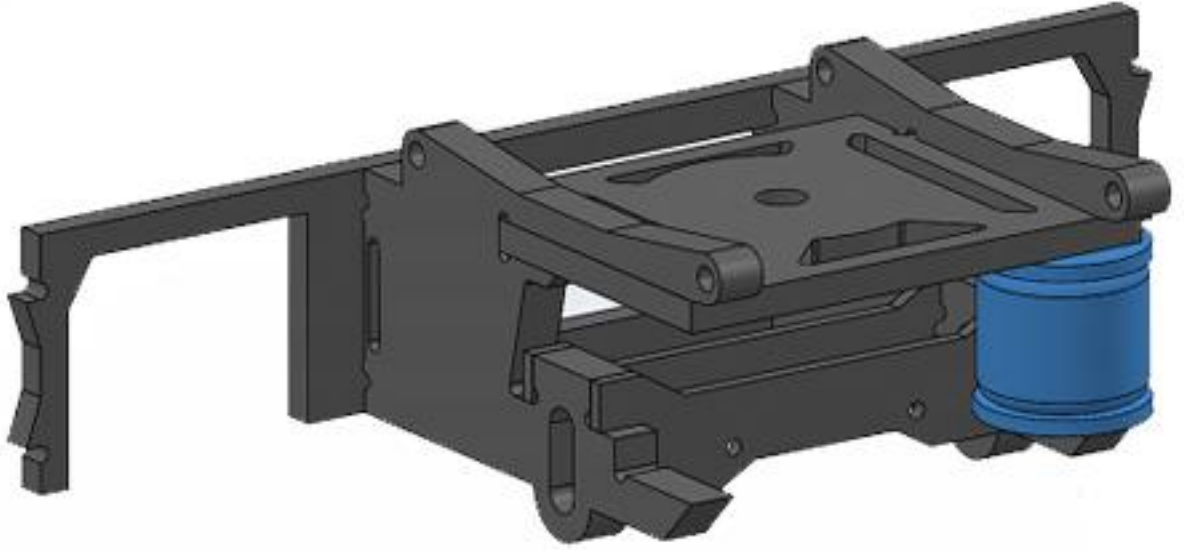
44



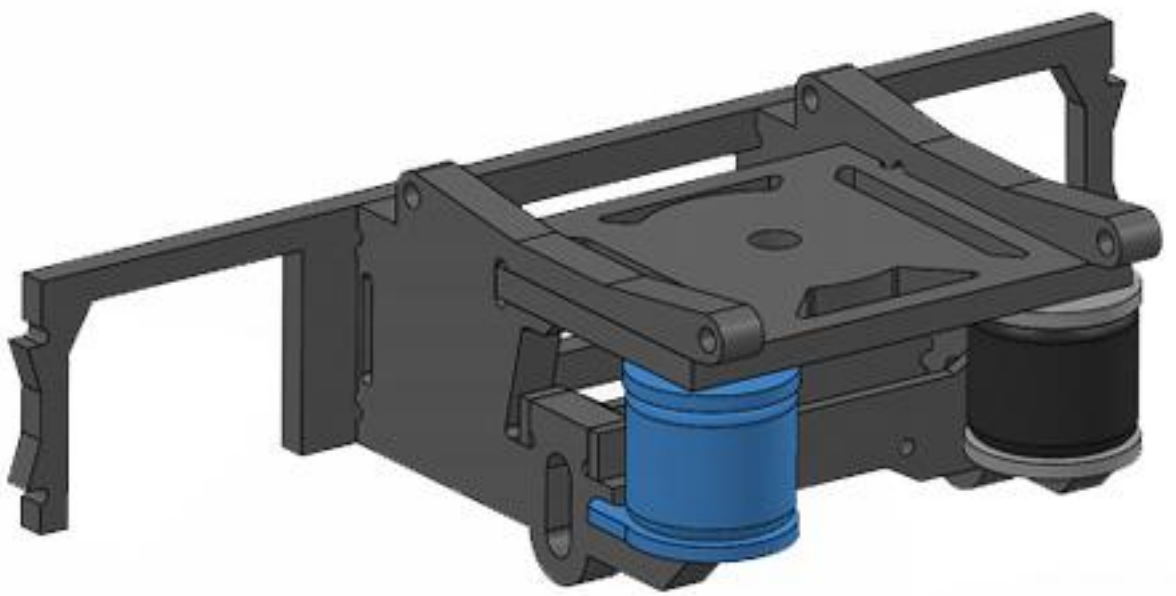
45



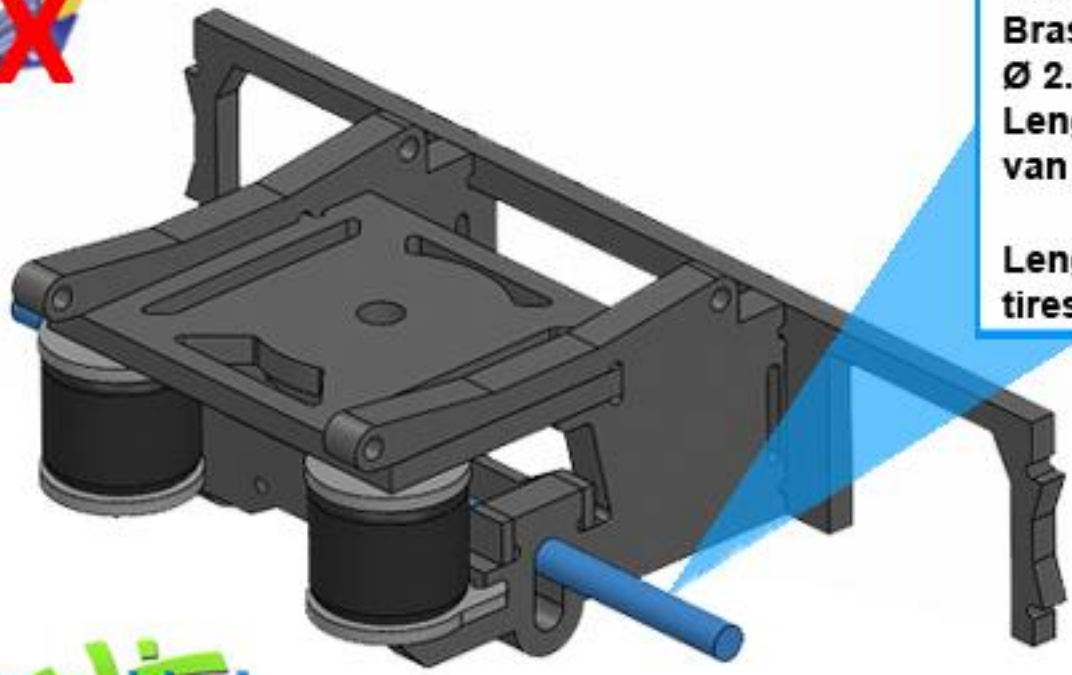
46



47



48



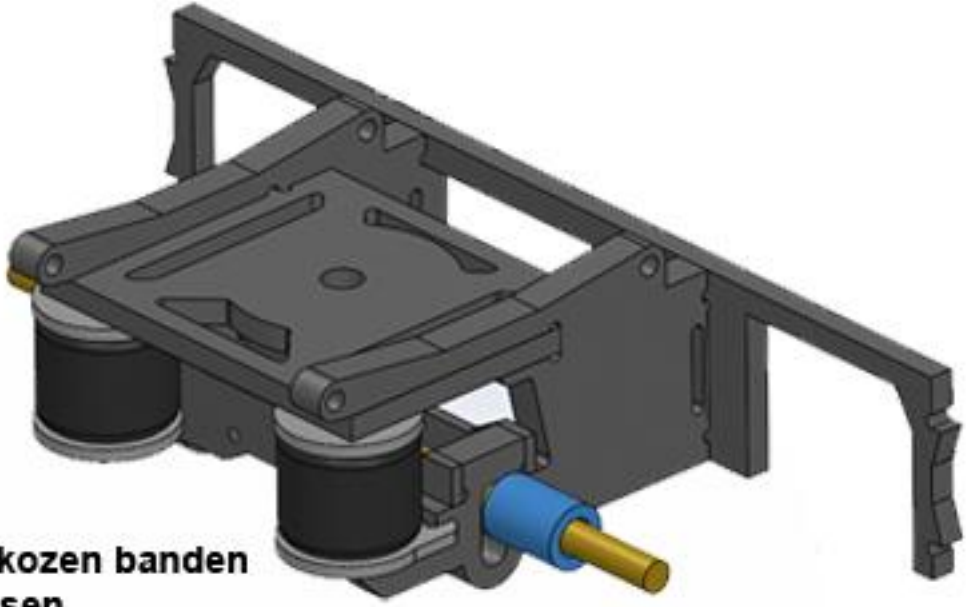
Messing as:
Brass axle:
 Ø 2.5 mm
 Lengte = afhankelijk
 van gekozen banden

**Length = used for
 tires choose**

49 ~~X~~



2x



profiel / profile:

A= 3 mm

B= 4 mm

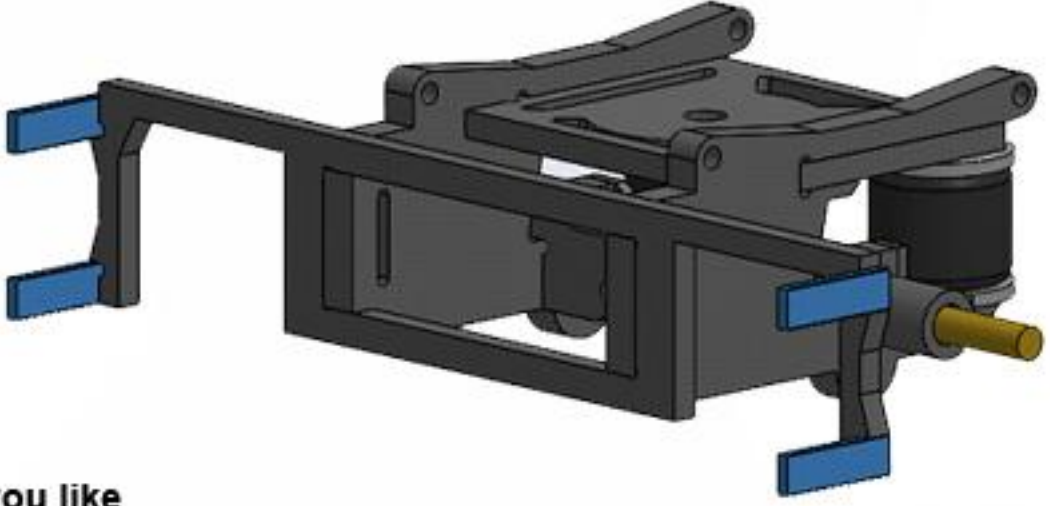
Lengte = afhankelijk van gekozen banden

length = used for tires chooseen

50



4x



profiel / profile:

A= 1 mm

B= 3 mm

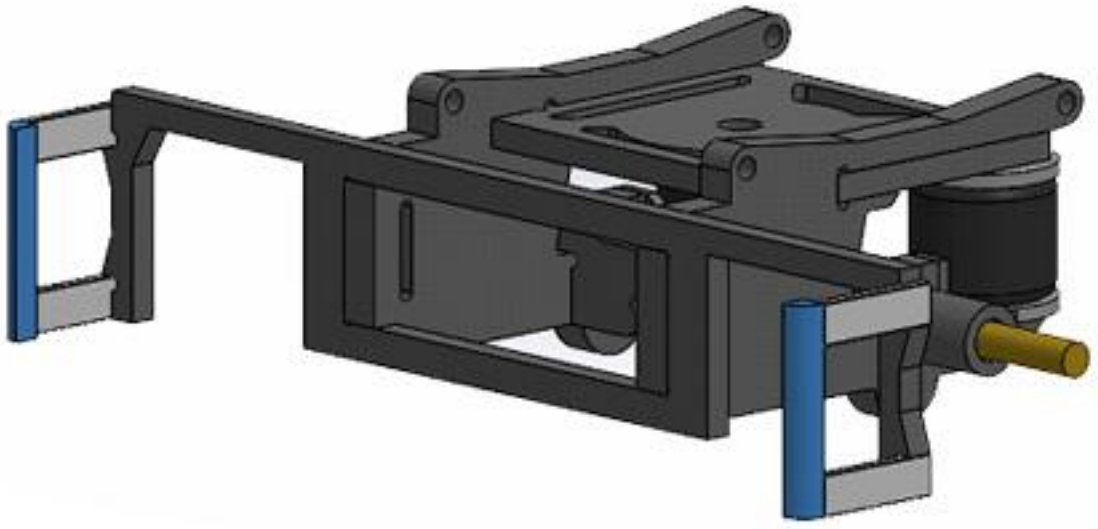
Lengte = Kies zelf

length = choose what you like

51



2x

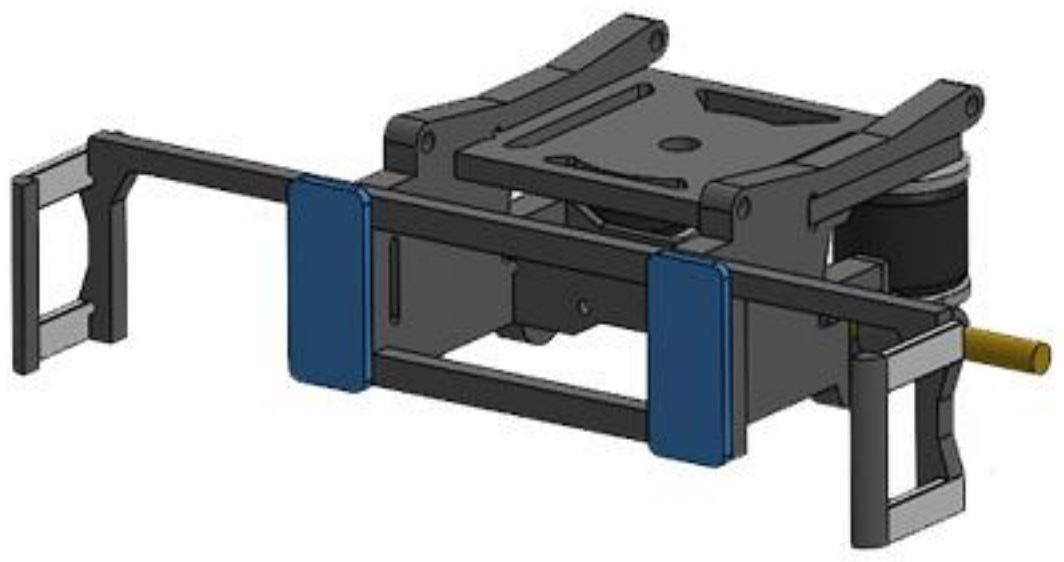


profiel / profile:

Lengte = 15 mm

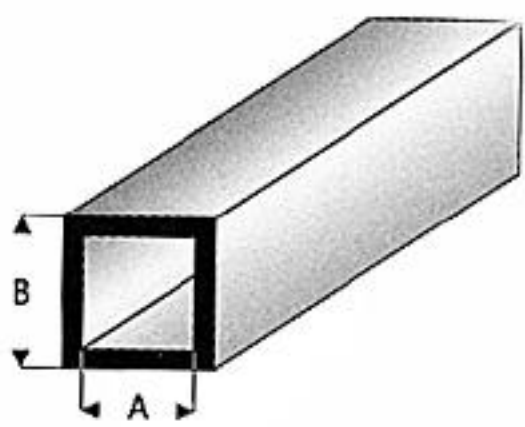
length = 15 mm

52



53

2X

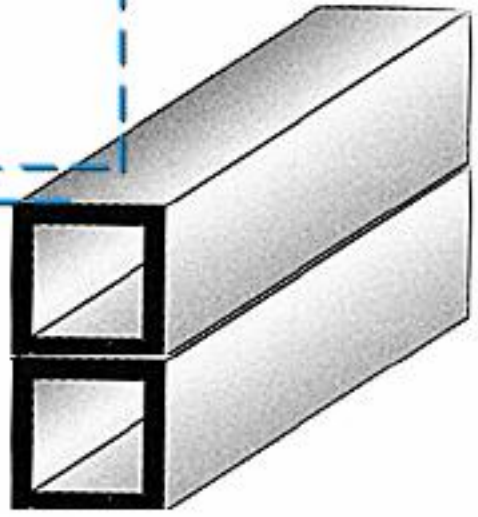


profiel / profile:
A= 3 mm
B= 5 mm
lengte / length = 19 mm

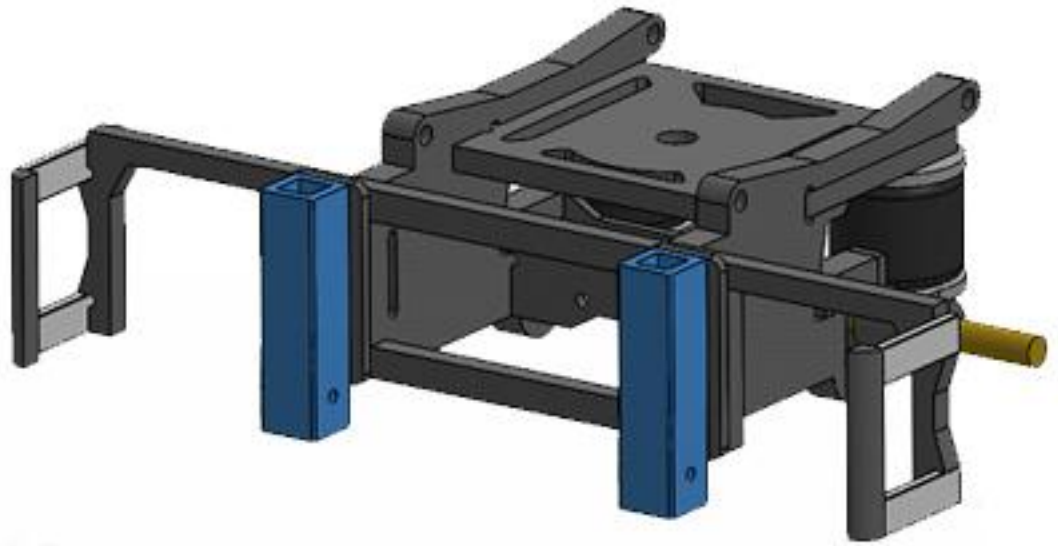


Ø 1 mm

3 mm



54

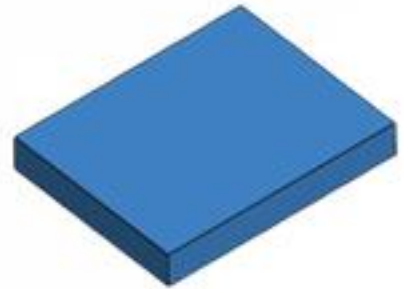


55 Start

2X



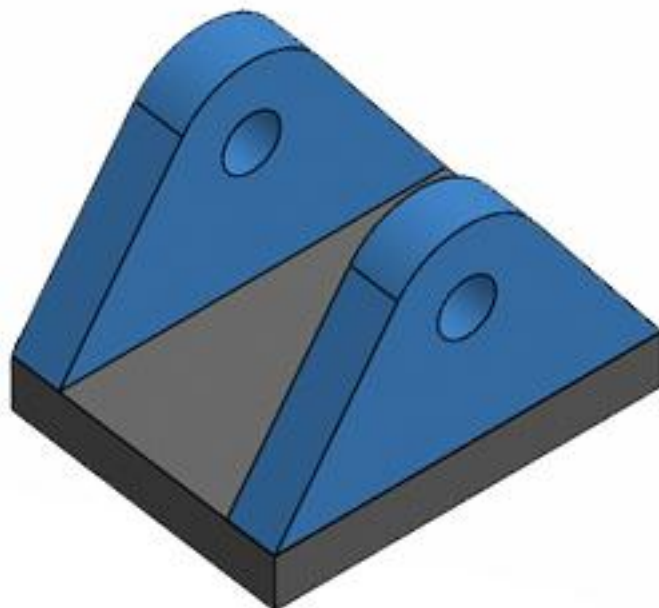
2X



56

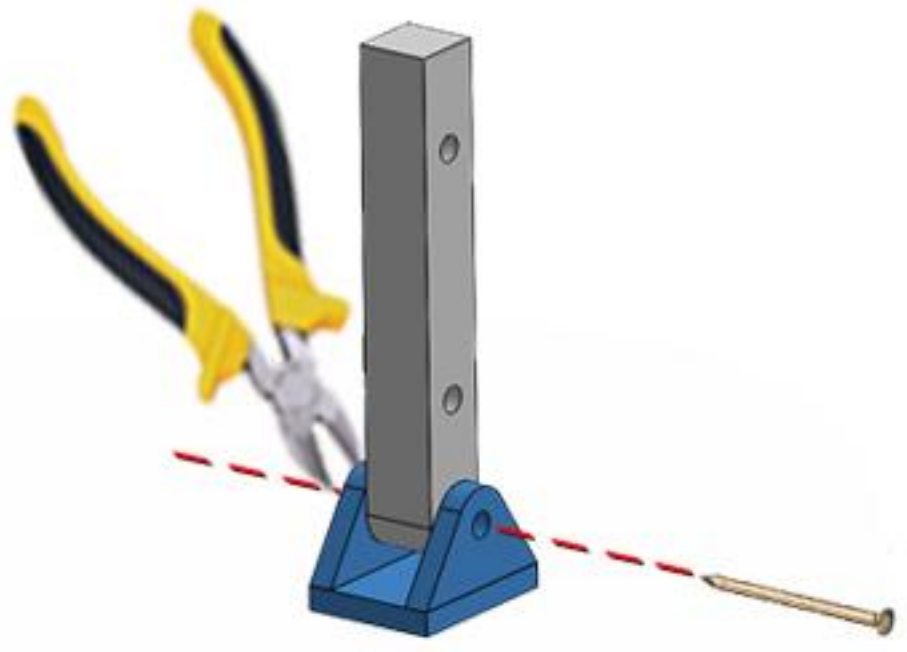


2X

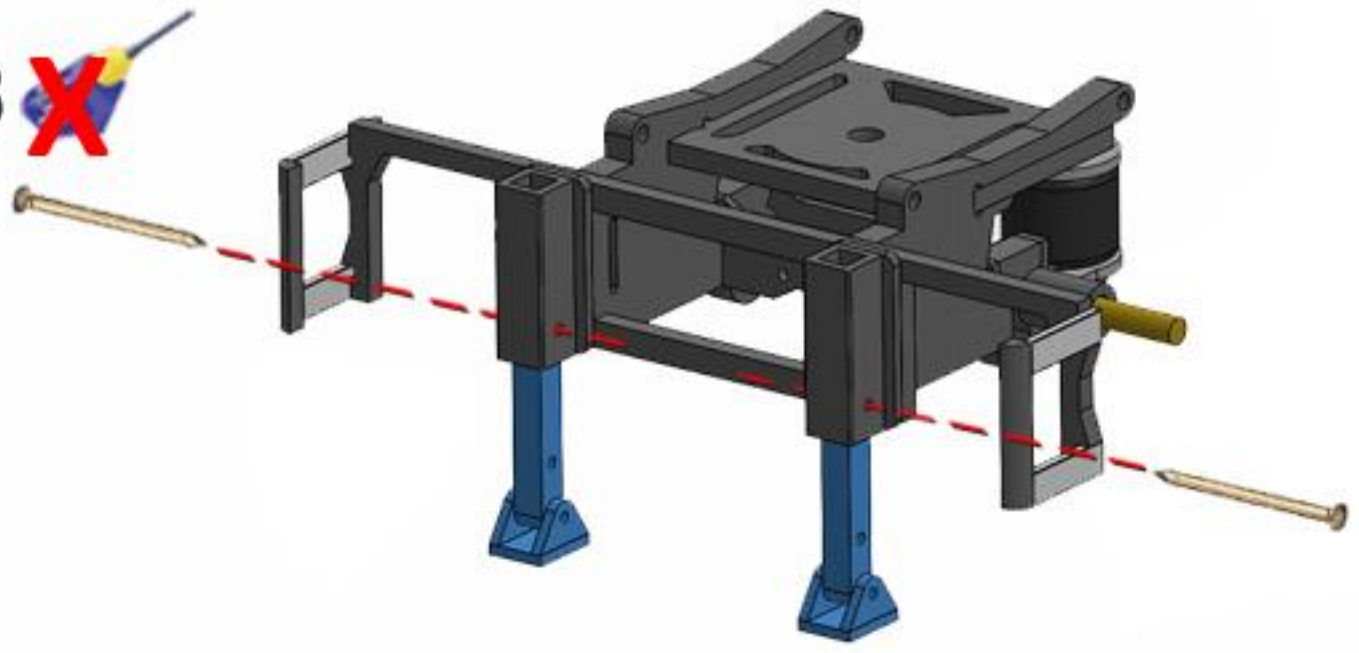


57 

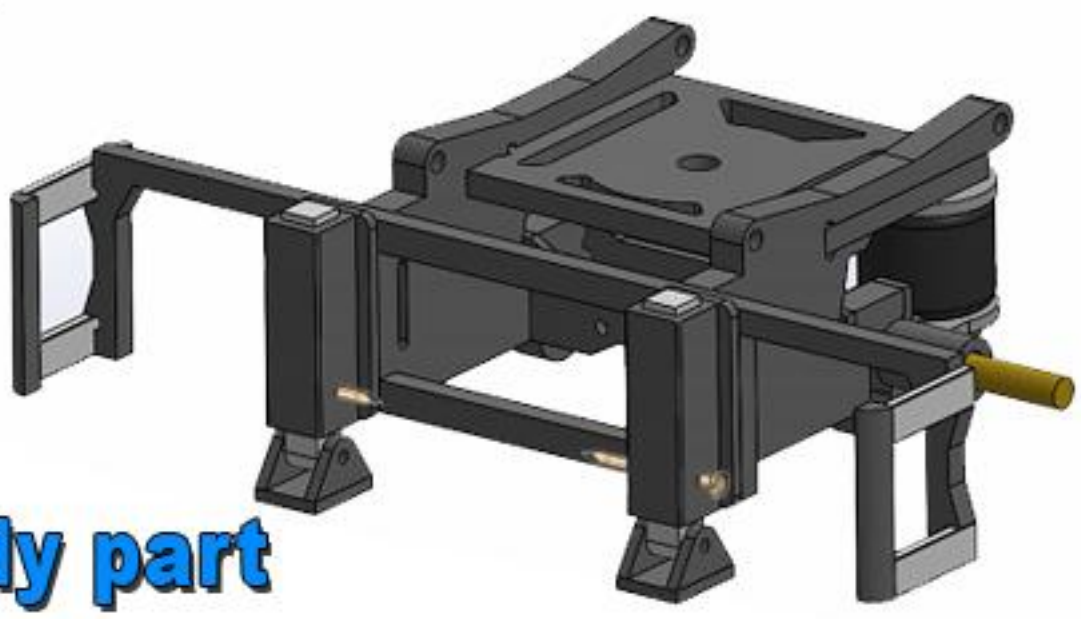
2X



58 



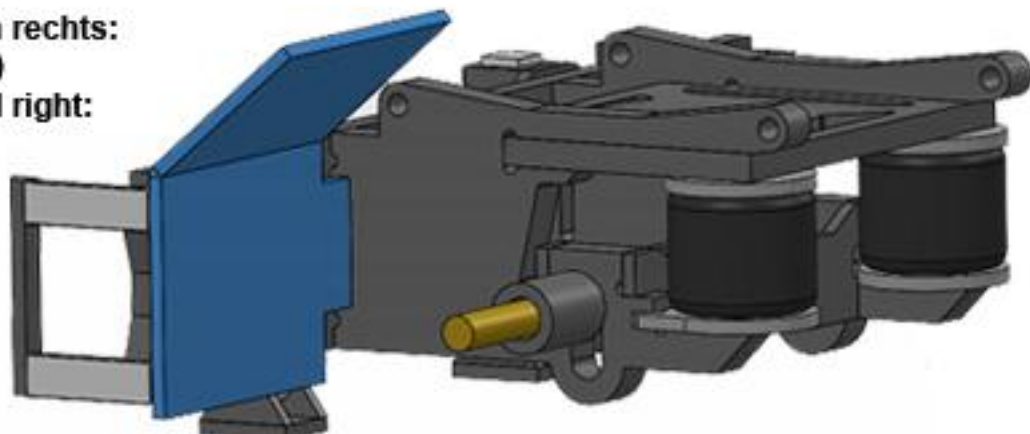
59 



Ready part

60 Optie 1 / Option 1

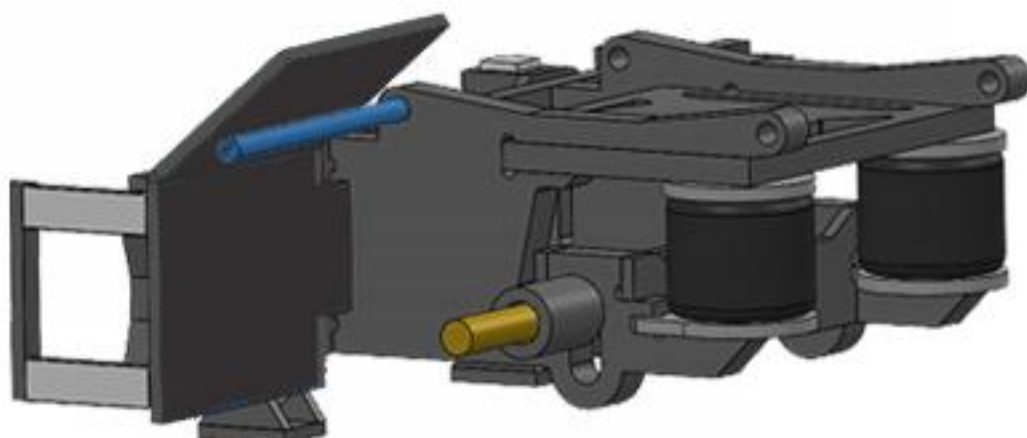
Vooras spatbord links en rechts:
(meegeleverd in bouwkit)
Front axle fender left and right:
(available in kit)



61



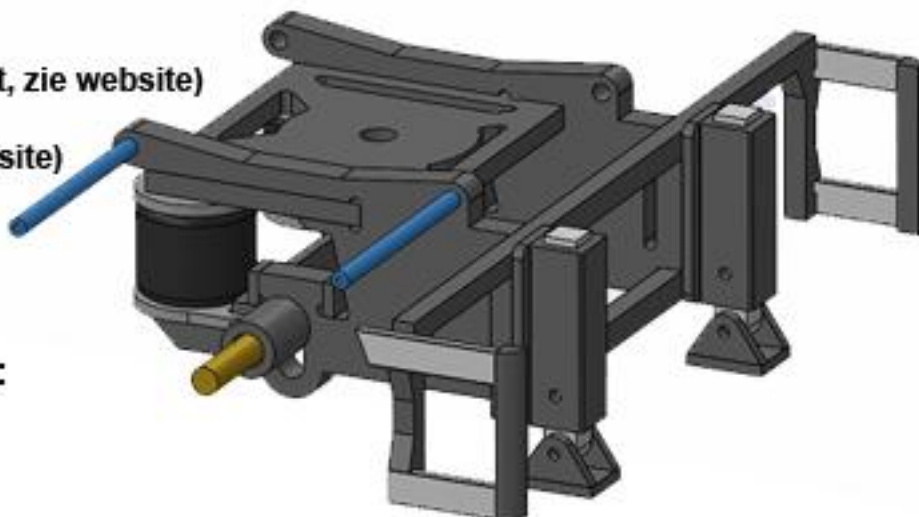
Gebruik
Aluminium buis:
Use Aluminum pipe:
Ø 1.6 mm



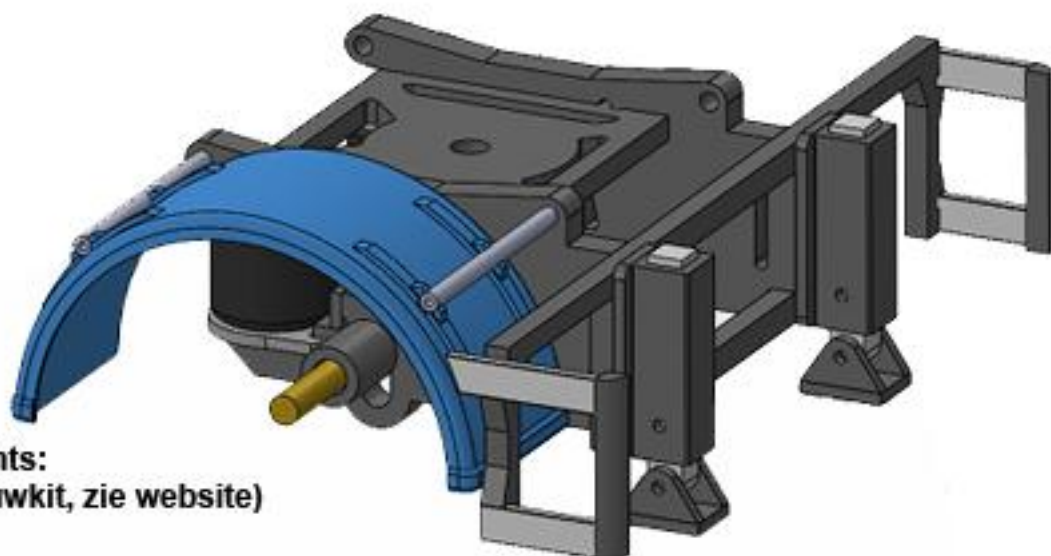
62 Optie 2 / Option 2

Spatbord links en rechts:
(niet meegeleverd in bouwkit, zie website)
Fender left and right:
(not available in kit, see website)

Gebruik
Aluminium buis:
Use Aluminum pipe:
Ø 1.6 mm



63



Spatborden links en rechts:
(niet meegeleverd in bouwkit, zie website)

Fenders left and right:
(not available in kit, see website)

64 Start



65



66



67



68



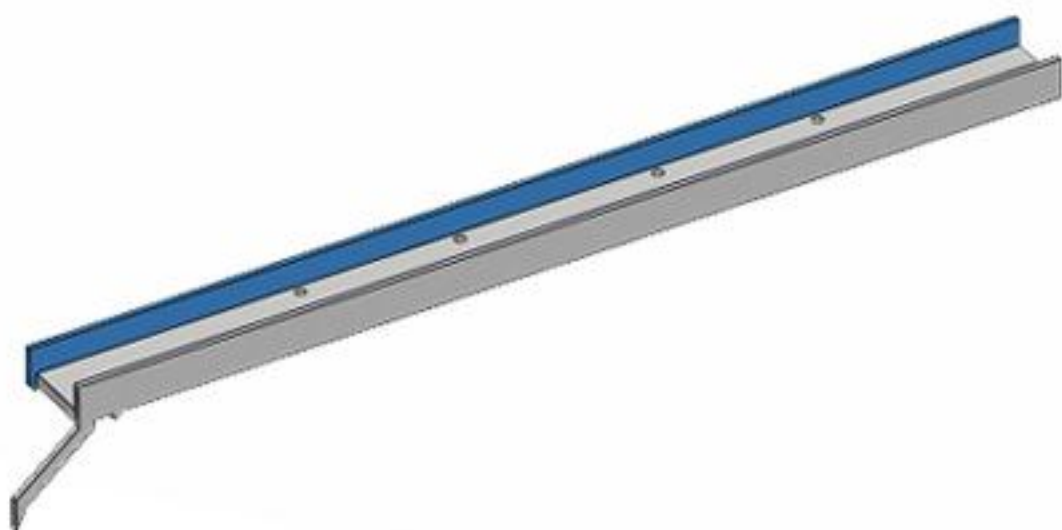
69 Start



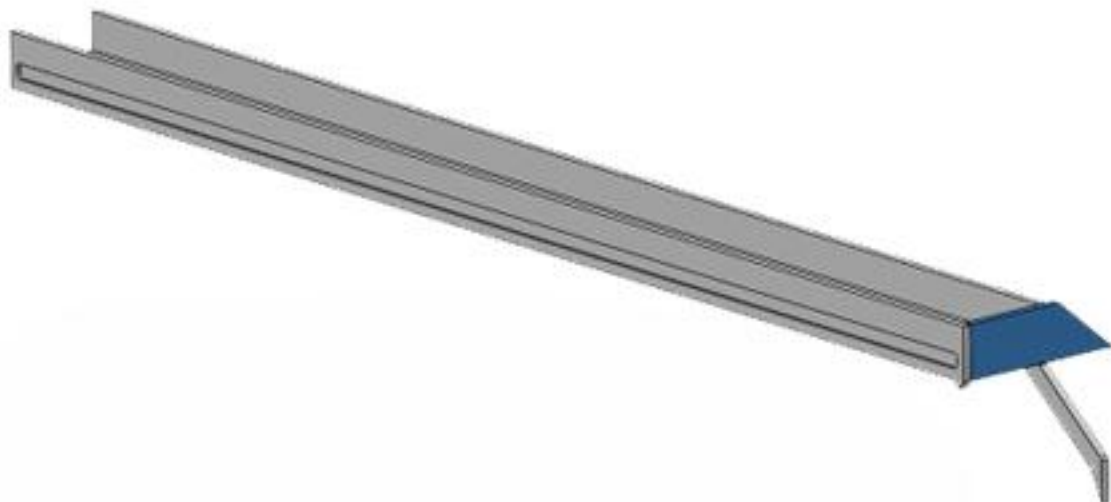
70



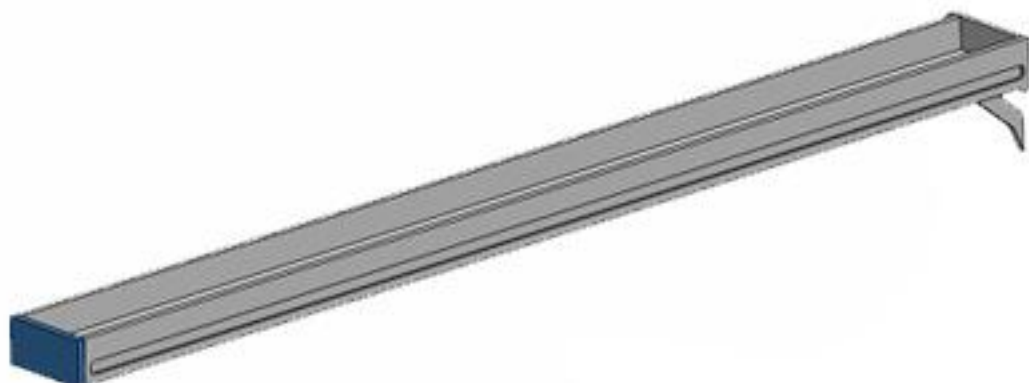
71



71



73



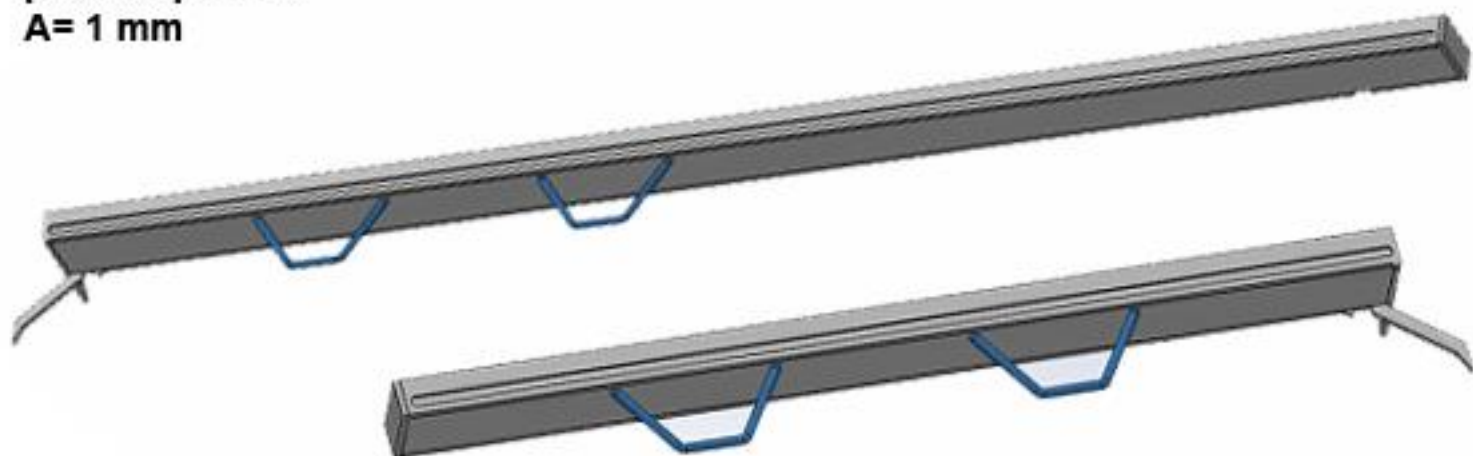
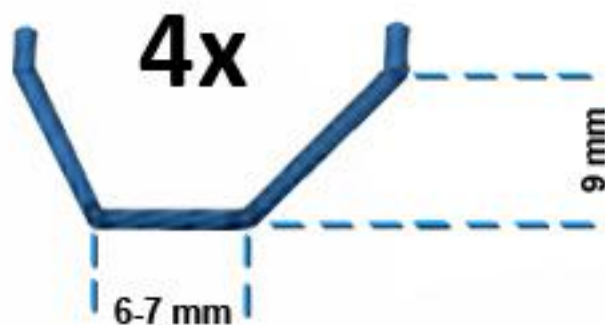
74



Buig in de gewenste vorm
Bend in the shape you like

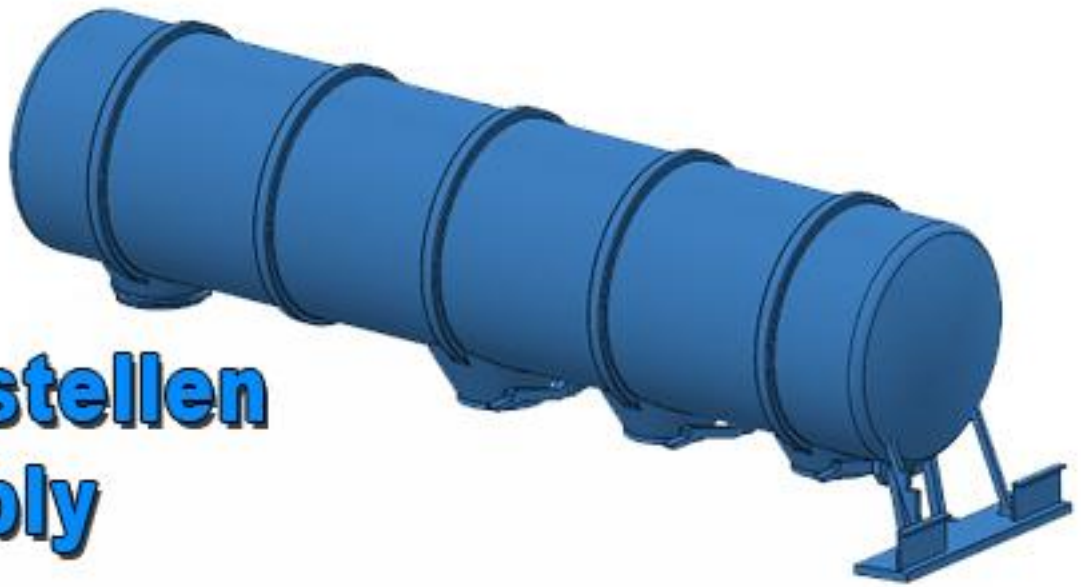


profiel / profile:
A= 1 mm



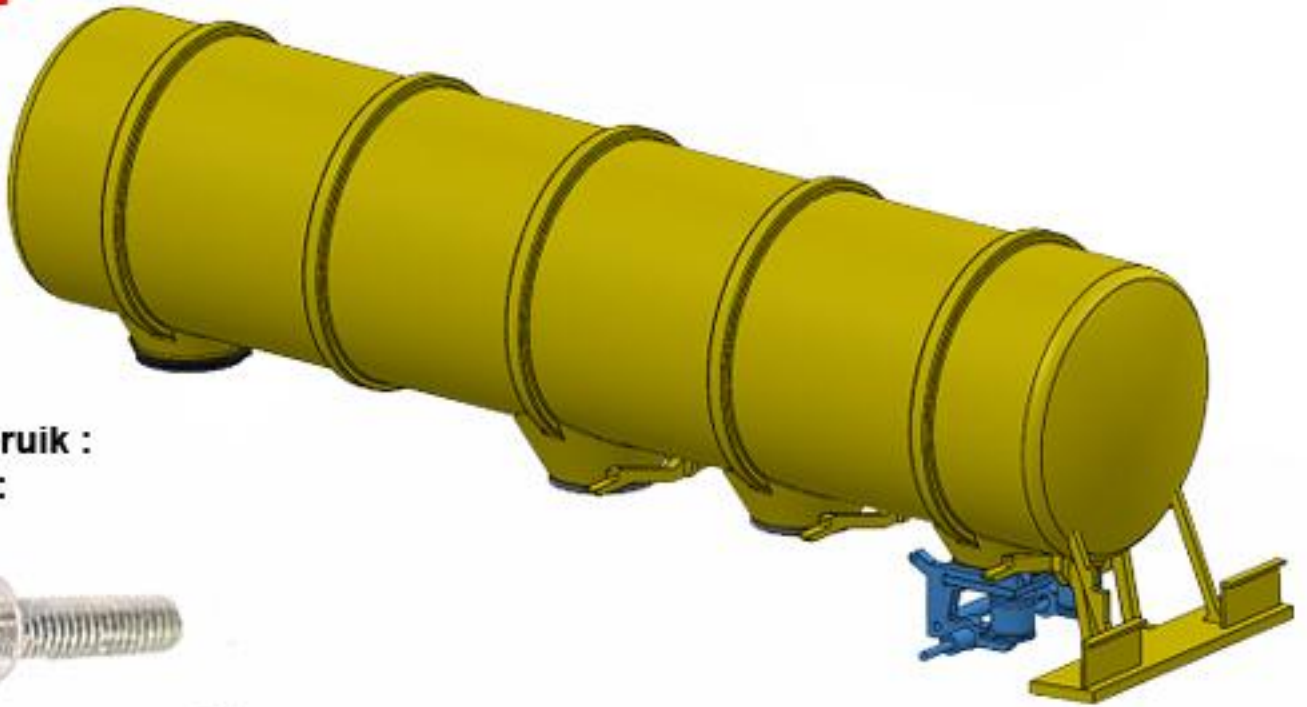
Ready parts

75



Samenstellen Assembly

76



Gebruik :
Use:

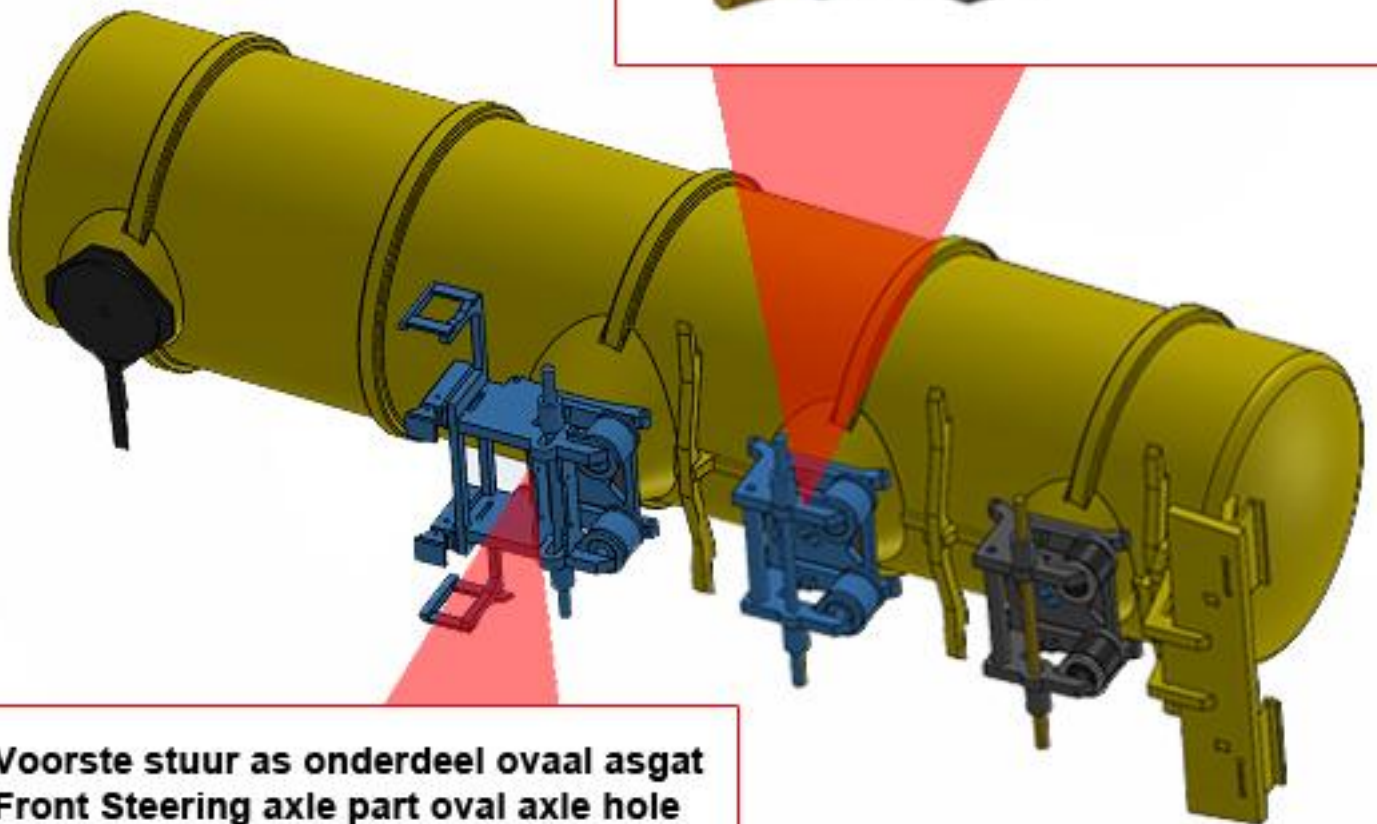
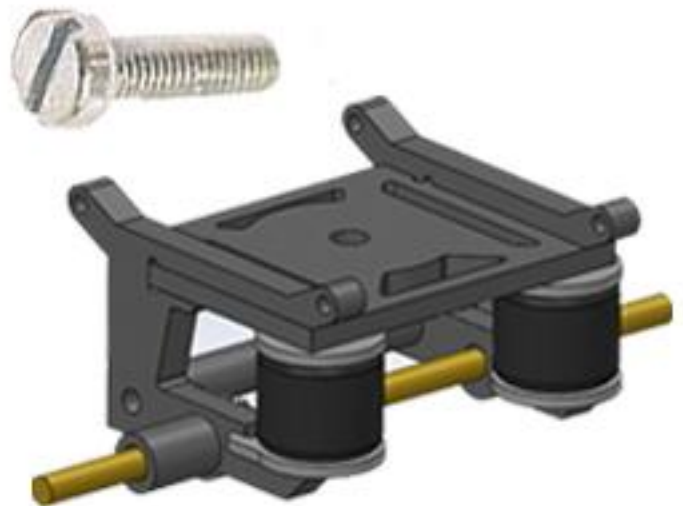


= Stuuras onderdeel OVAALasgat
= Steering axle part OVALaxle hole

77 Gebruik :
Use:



= Vaste as onderdeel OVAALasgat
= Not Steering axle part OVALaxle hole



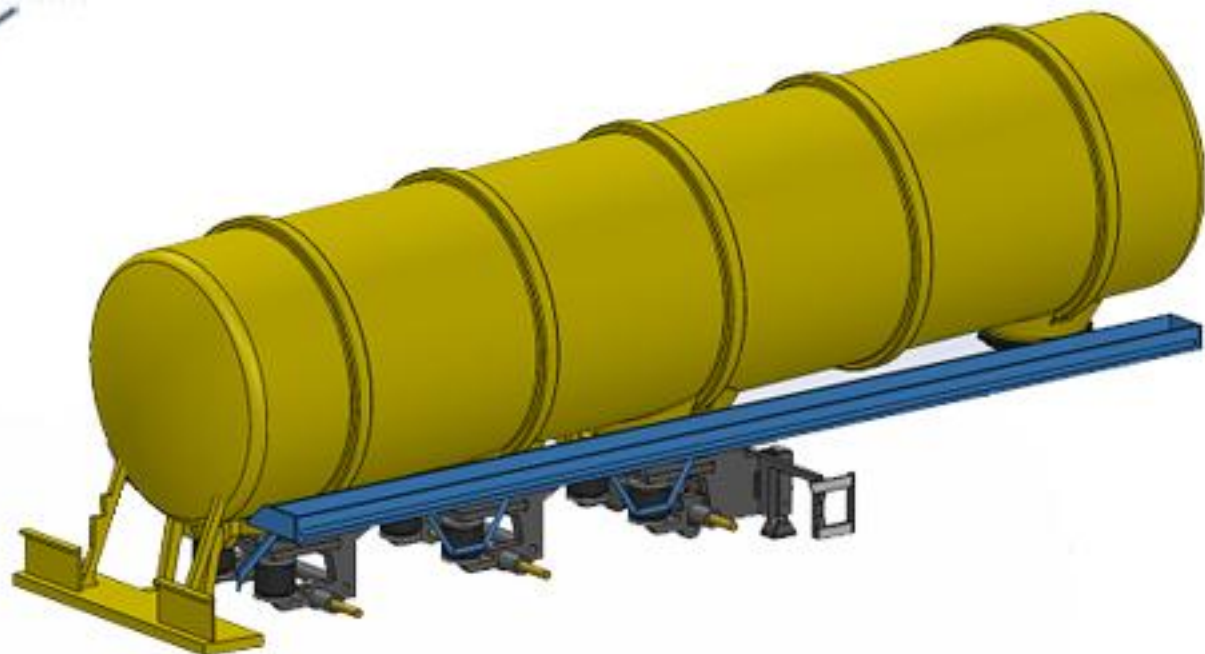
= Voorste stuur as onderdeel ovaal asgat
= Front Steering axle part oval axle hole



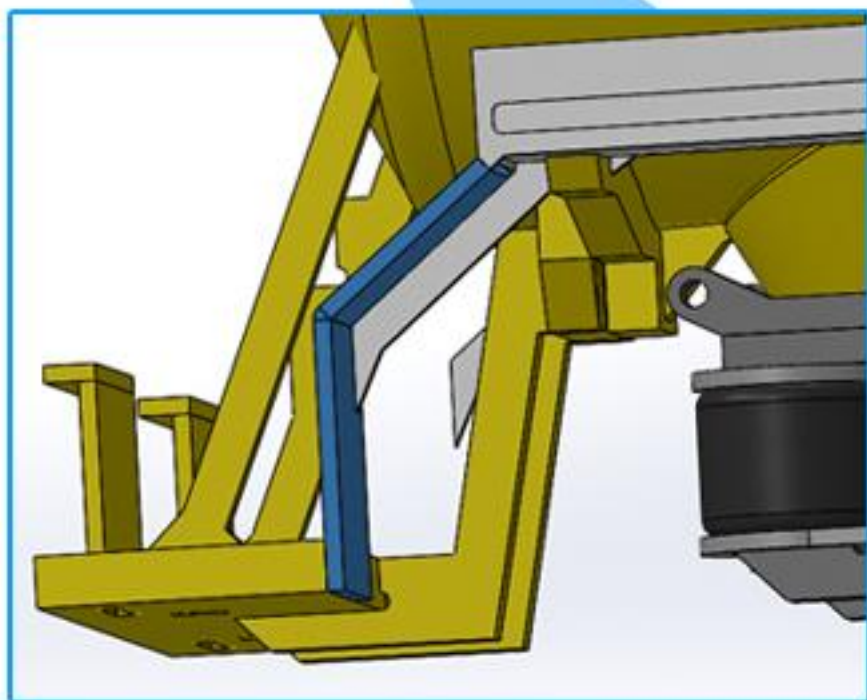
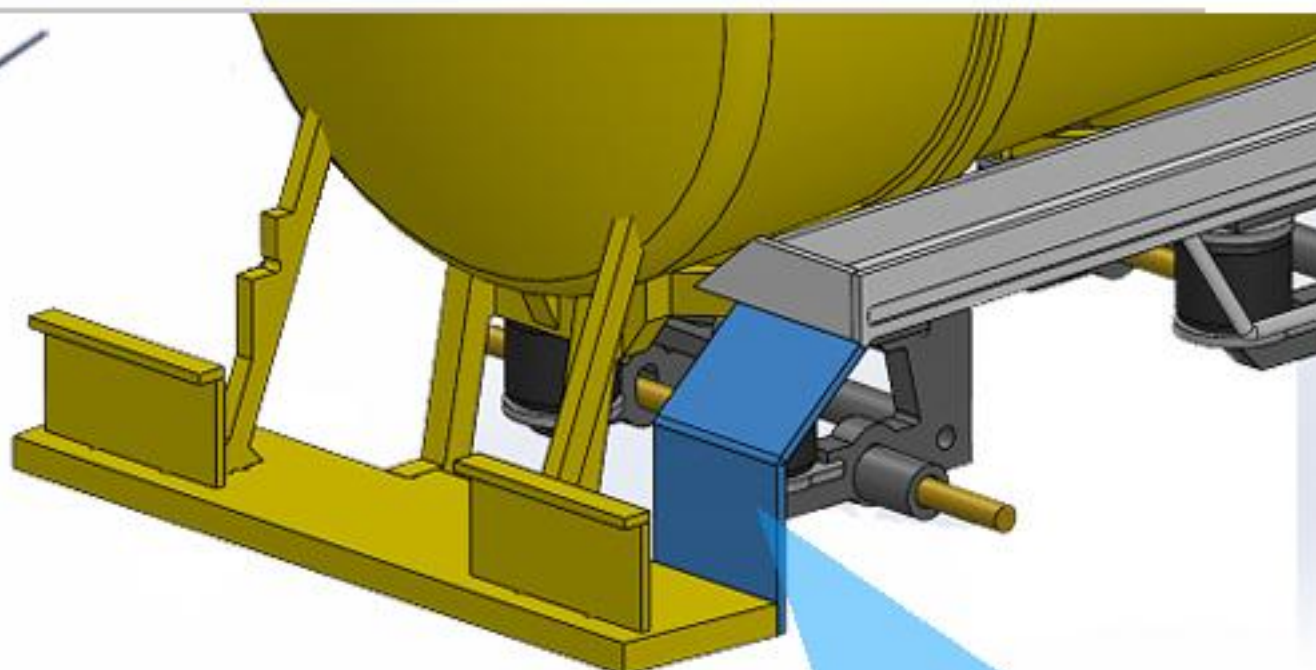
NIET LIJMEN / GEBRUIKEN
DO NOT GLUE / USE:



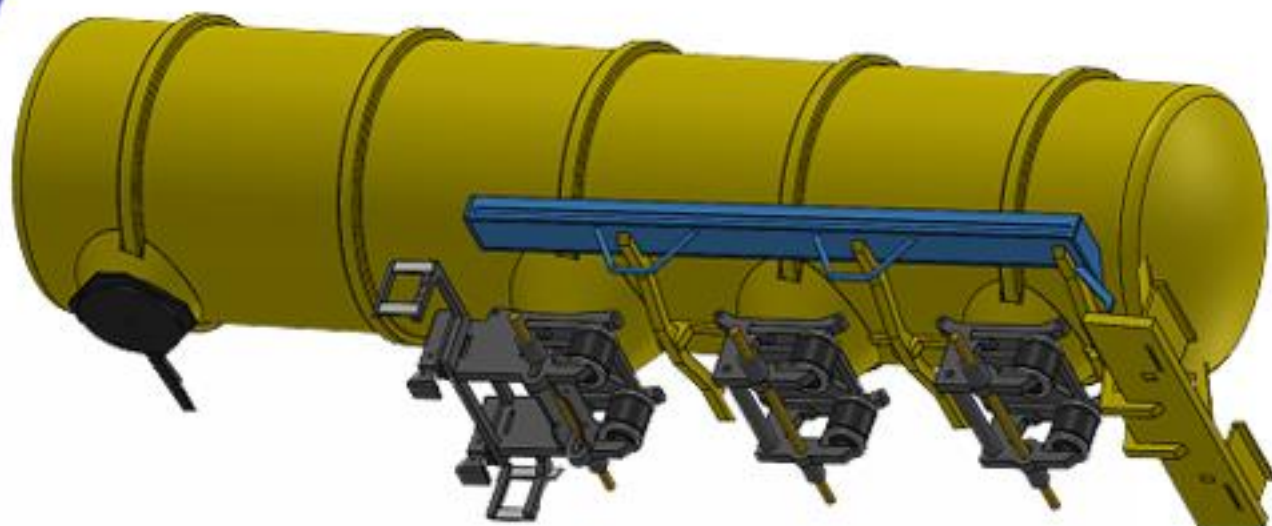
78



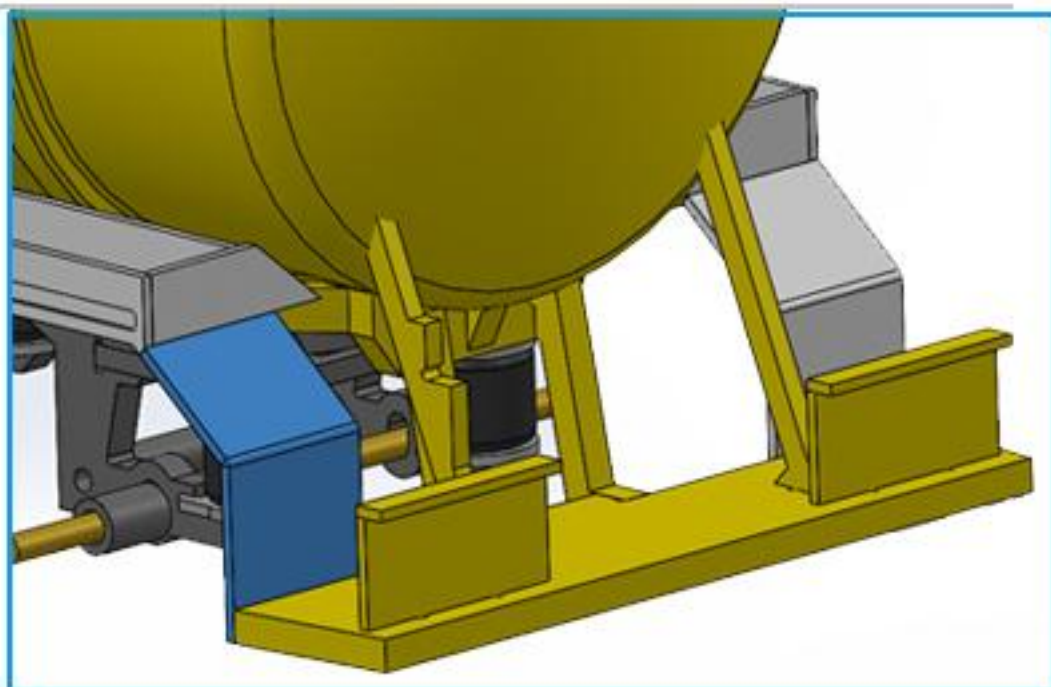
79



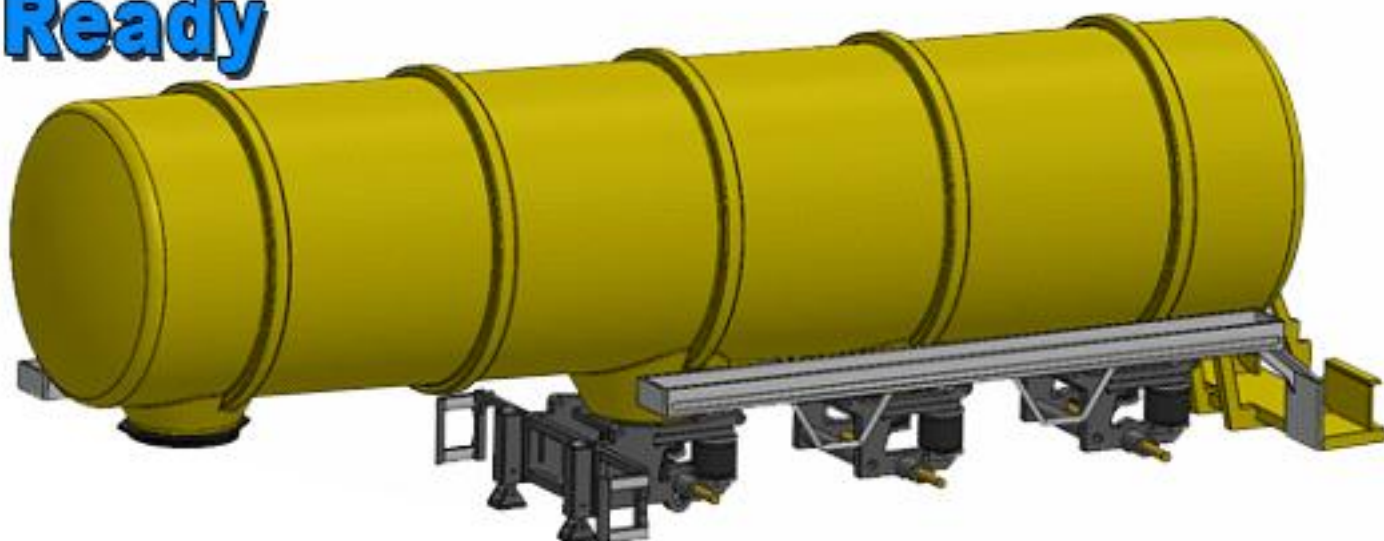
80



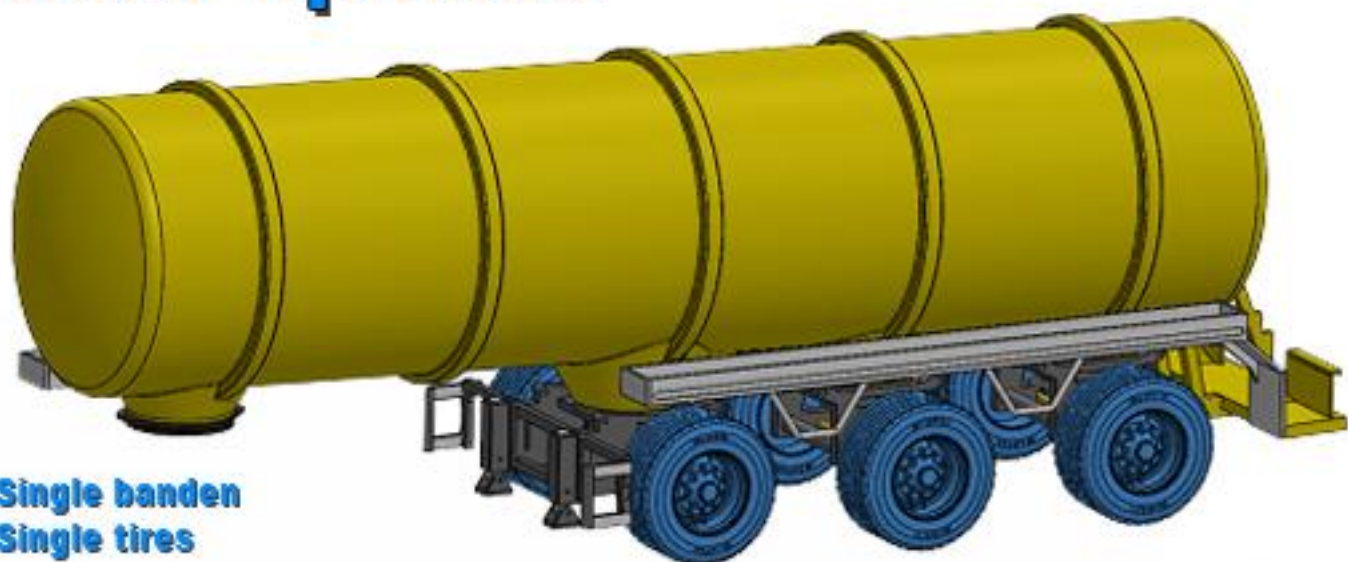
81



82 Ready



Opties: / Options:



Super Single banden
Super Single tires



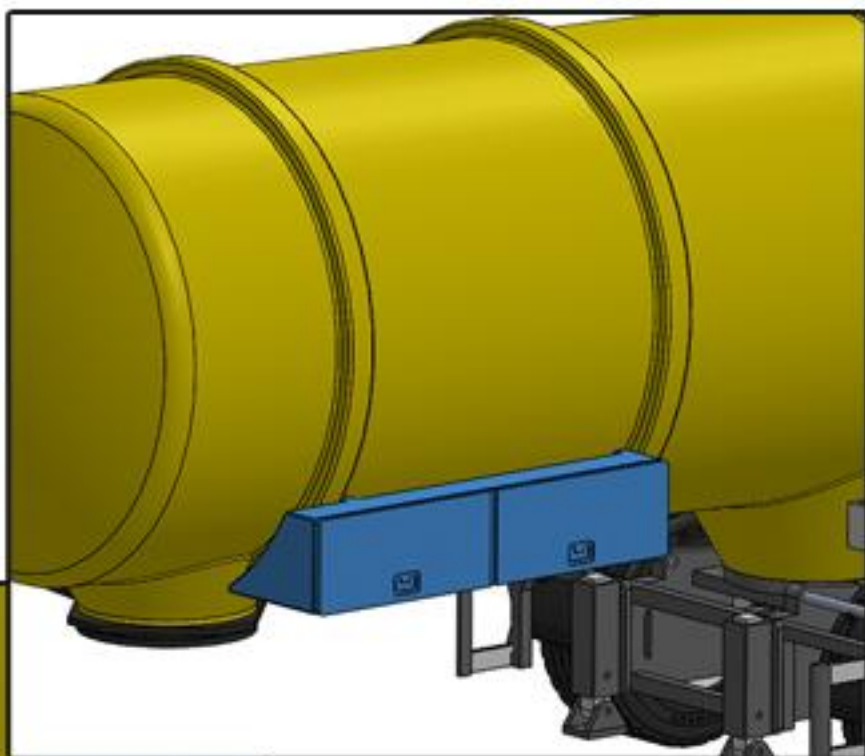
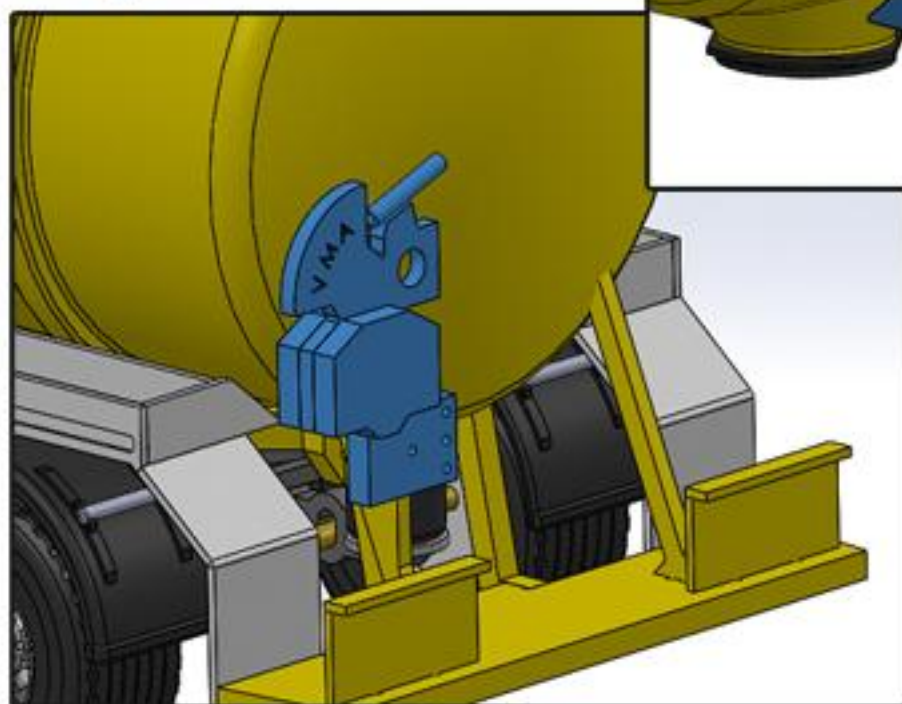
Dubbelle banden montering
Twin tires mounted



Spatborden breed / smal
Fendrs wide / small

Opties: Options:

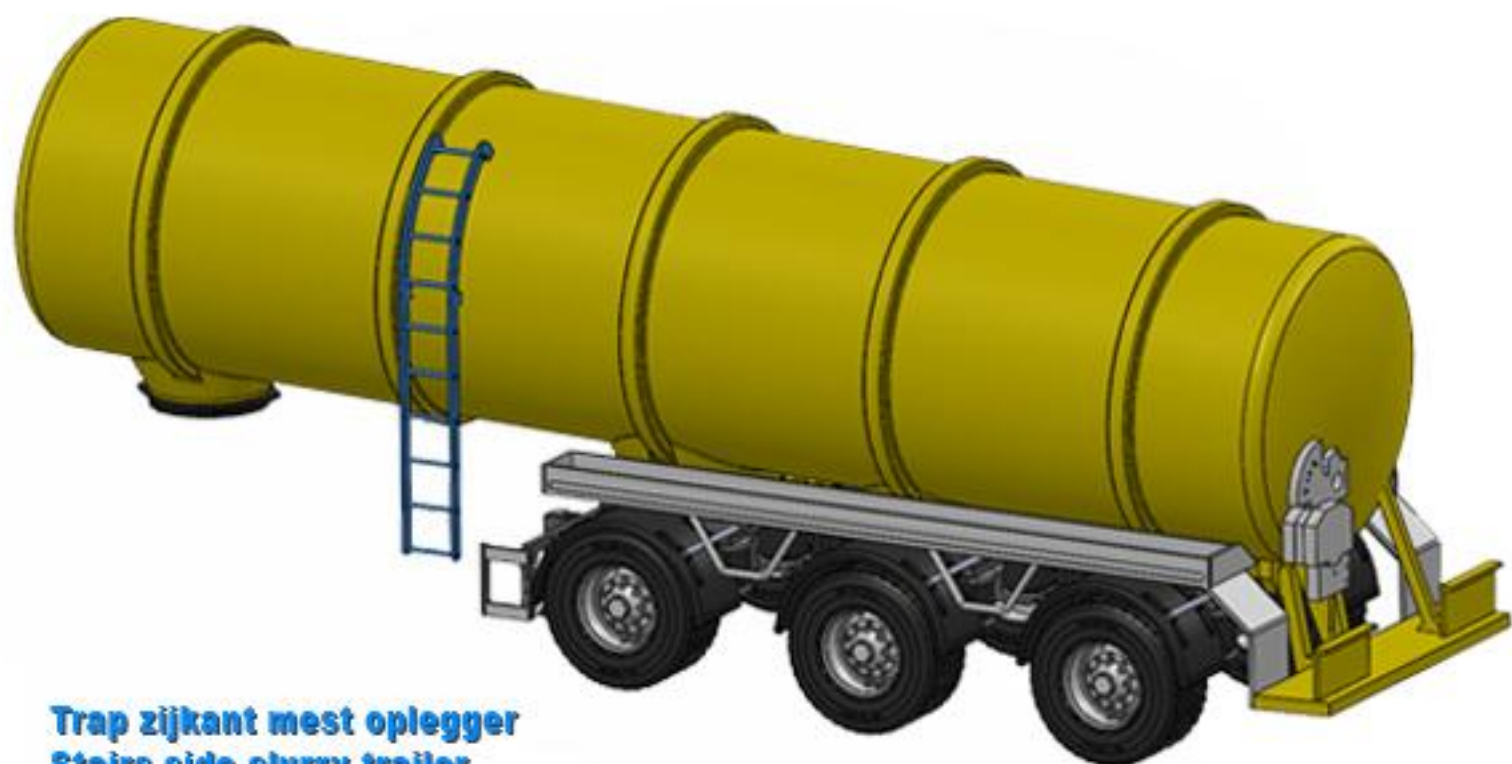
VMA monsterafname apparaat
VMA specimen collection device



Monster kabinet
Specimen cabinet



Opties: Options:



Trap zijkant mest oplegger
Stairs side slurry trailer



Bordes + trap achterkant mest oplegger
"Walk over" + stairs slurry trailer